



Frictional contacts

David A. Hills

Department of Engineering Science

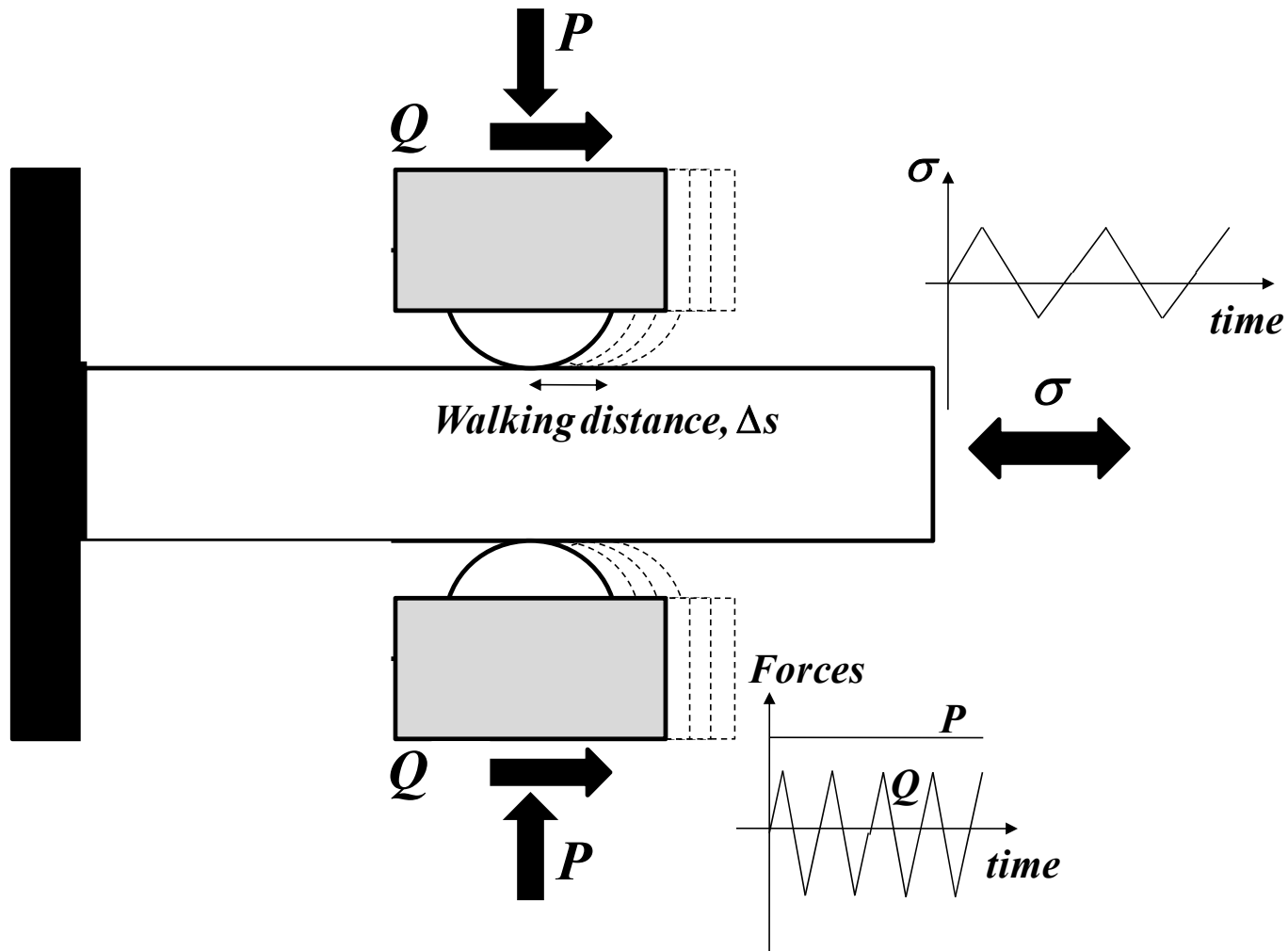
University of Oxford

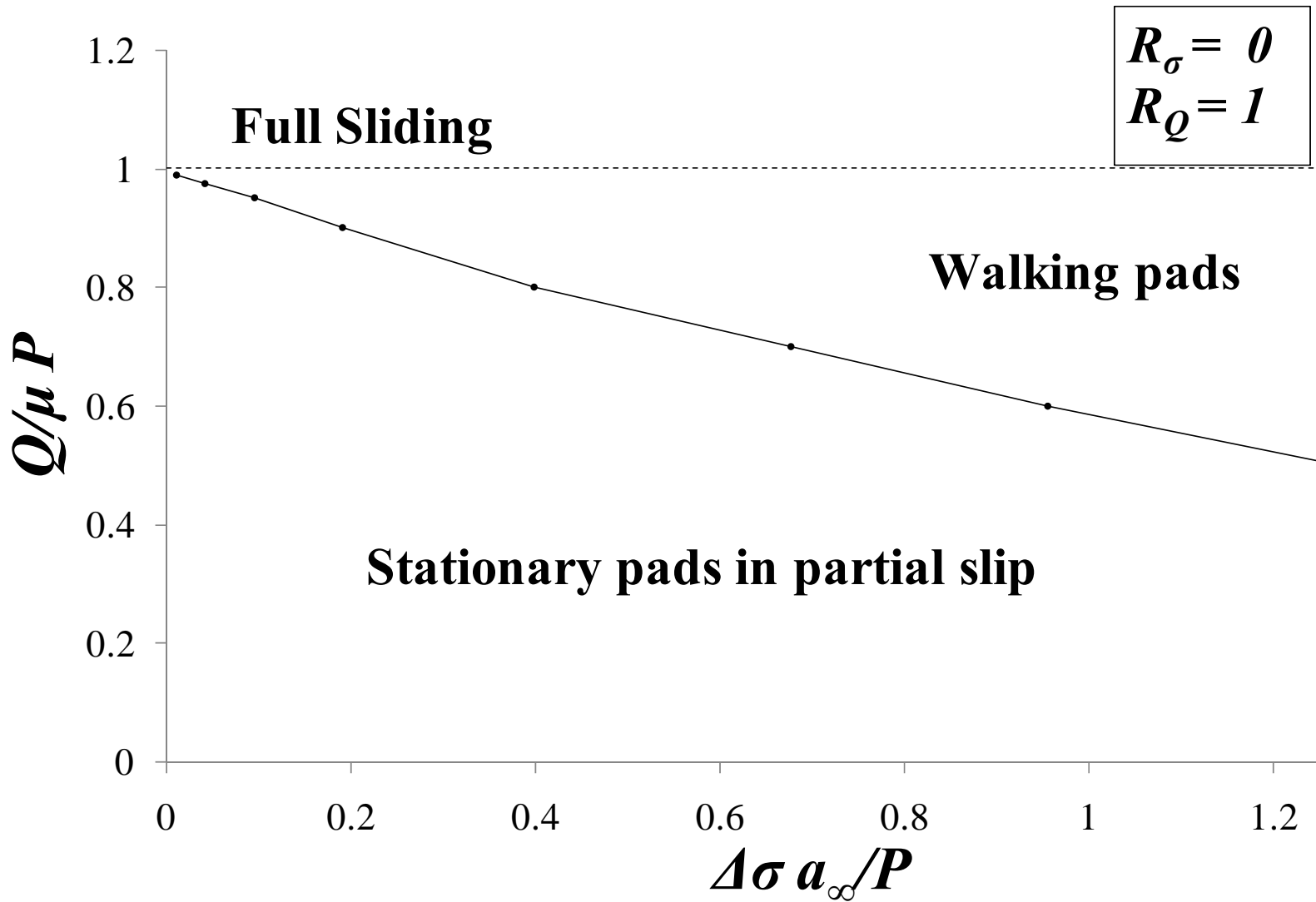
28/4/2009

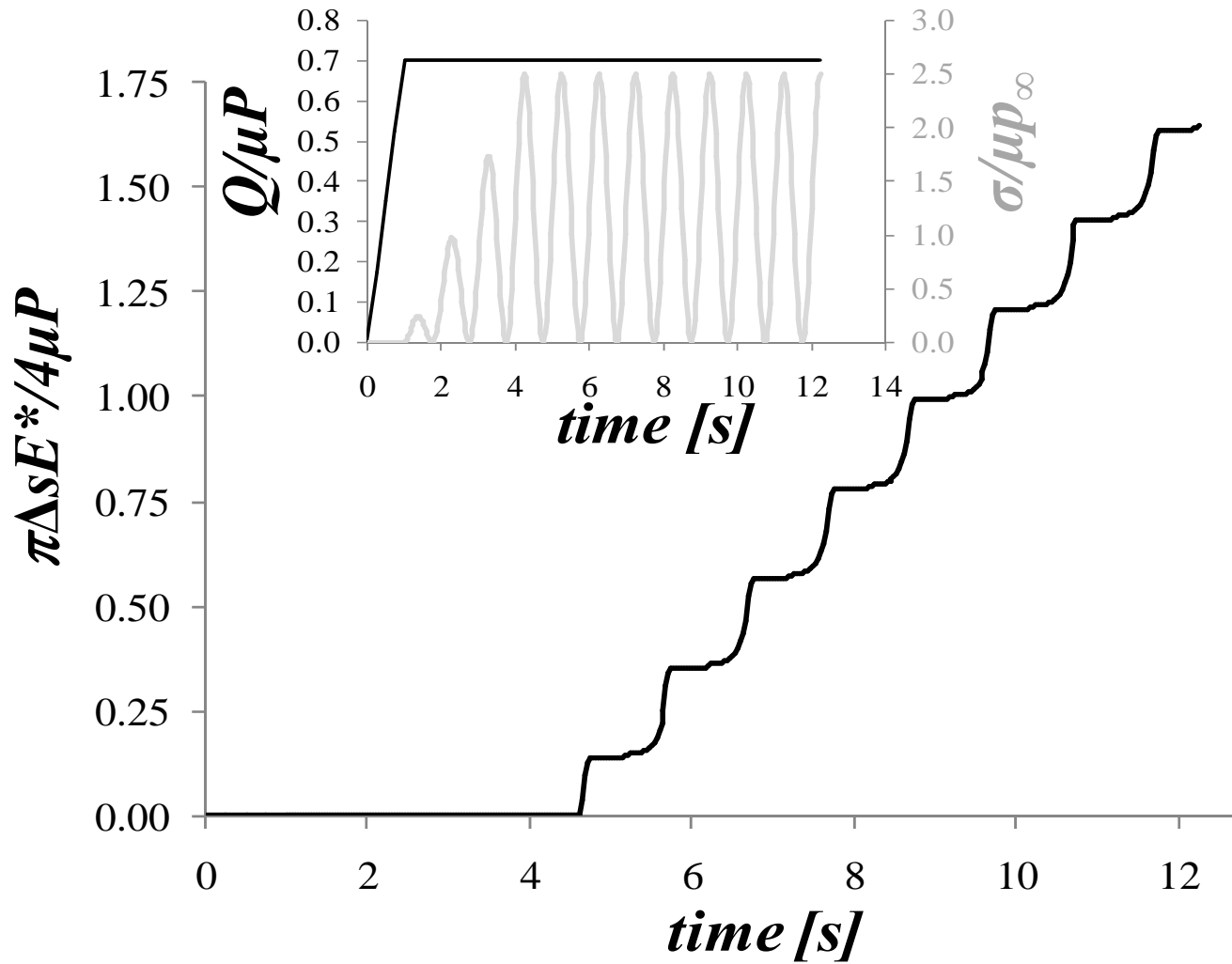


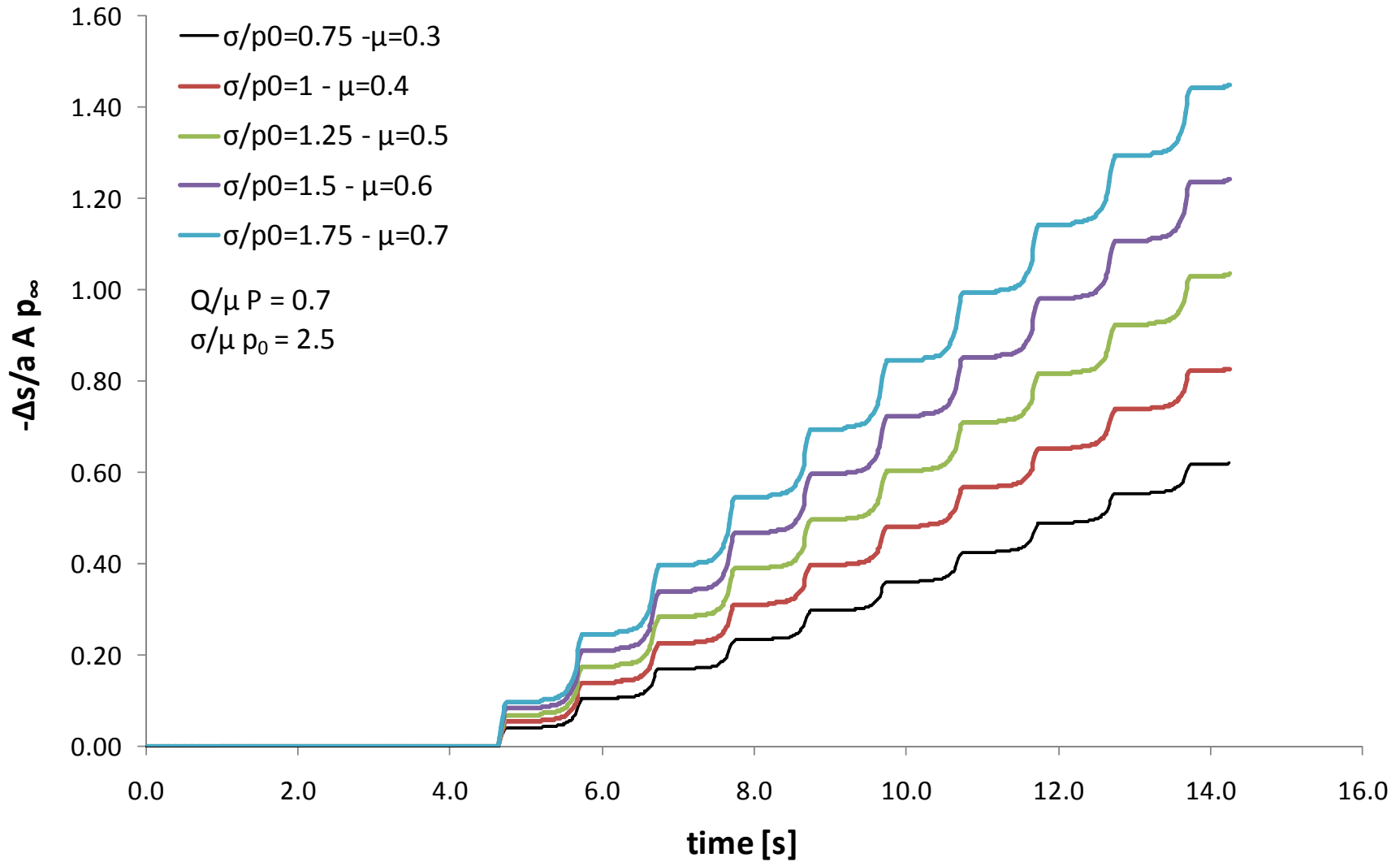
Rolls-Royce

Friction Measurements without Sliding



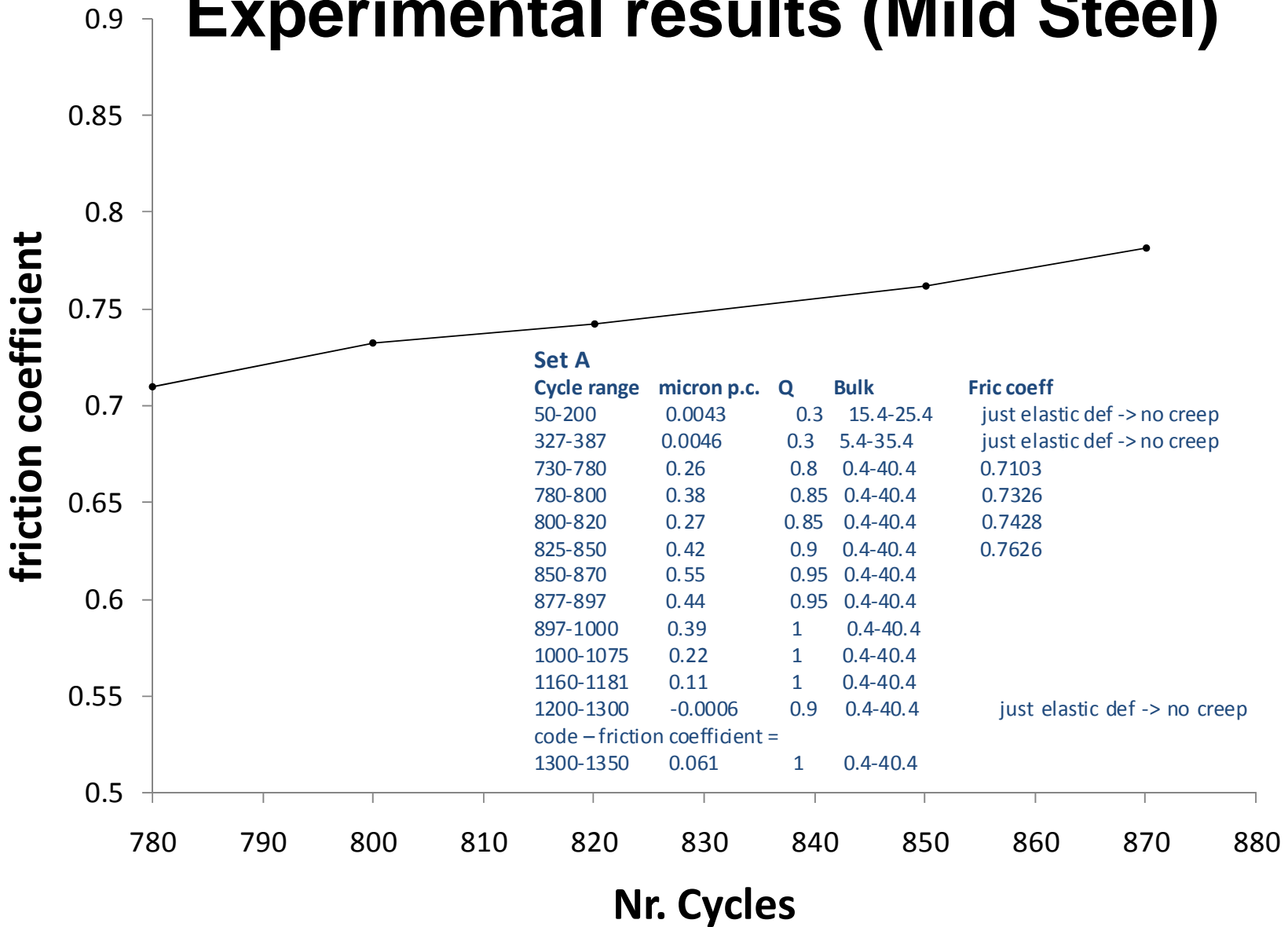








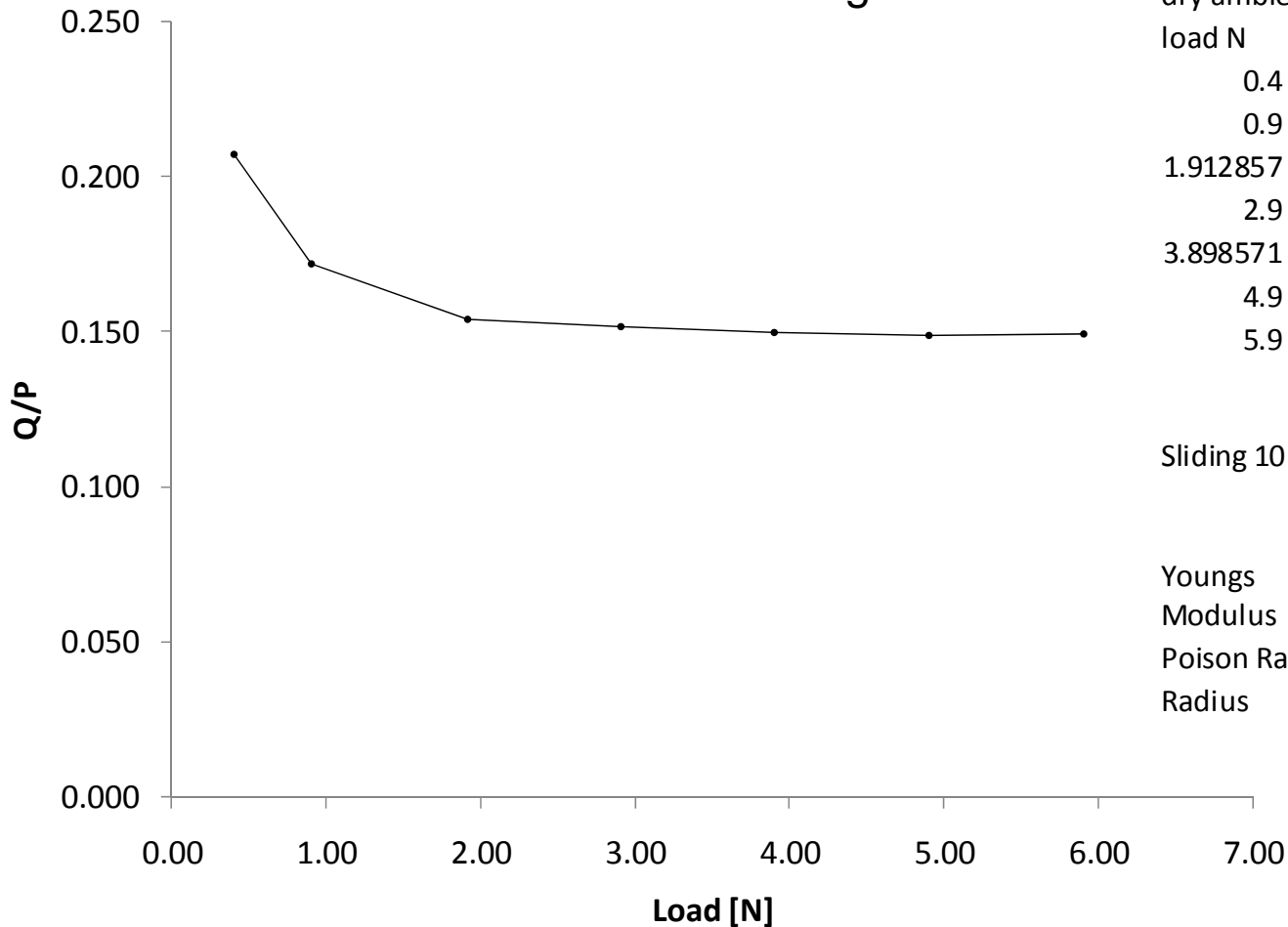
Experimental results (Mild Steel)





Pressure dependent friction?

Ball on disc – full sliding tests



dry ambient

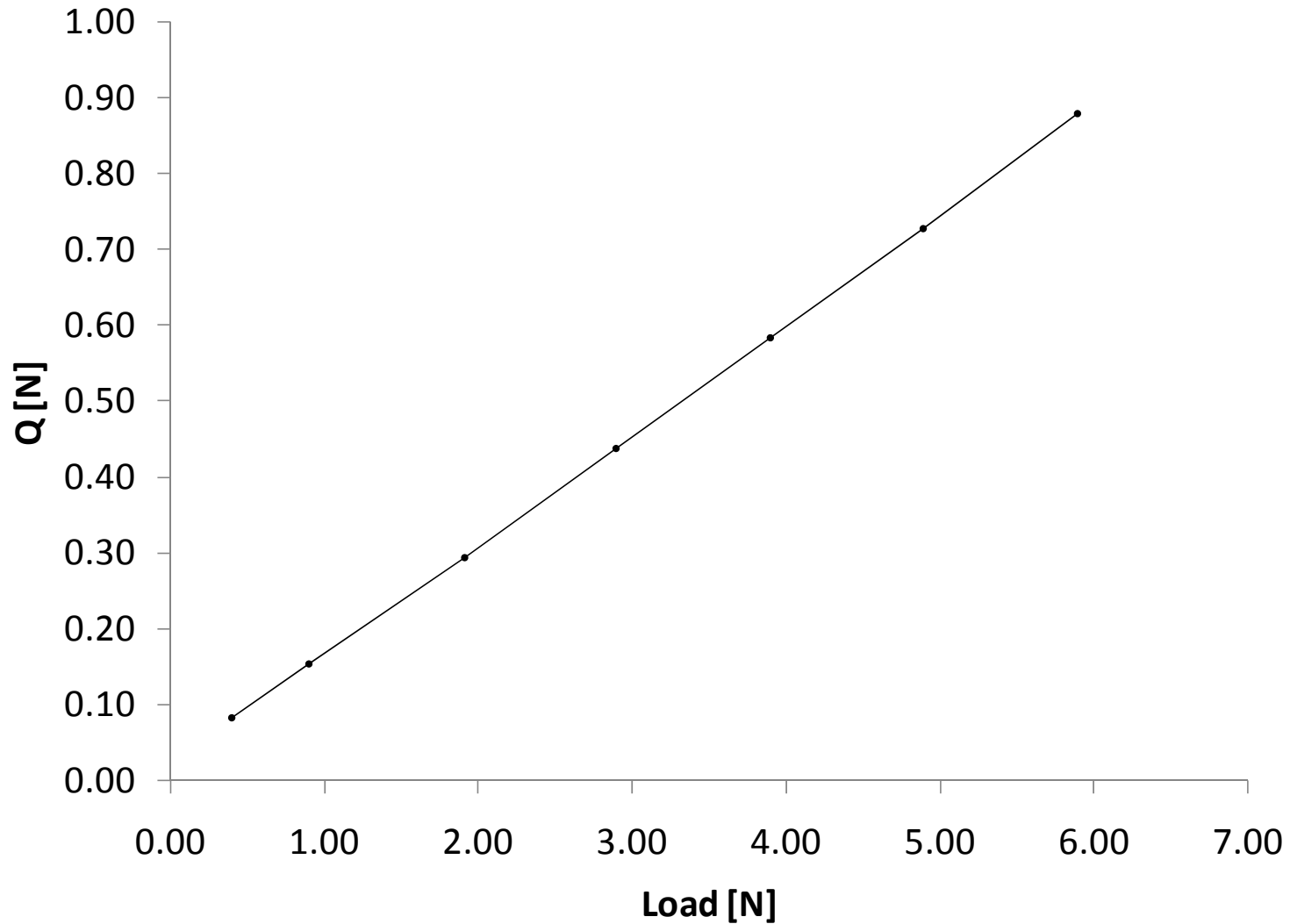
load N	friction coef
0.4	0.206947329
0.9	0.1714776
1.912857	0.153897914
2.9	0.151195286
3.898571	0.149629586
4.9	0.1485512
5.9	0.149006757

Sliding 10 mm/s

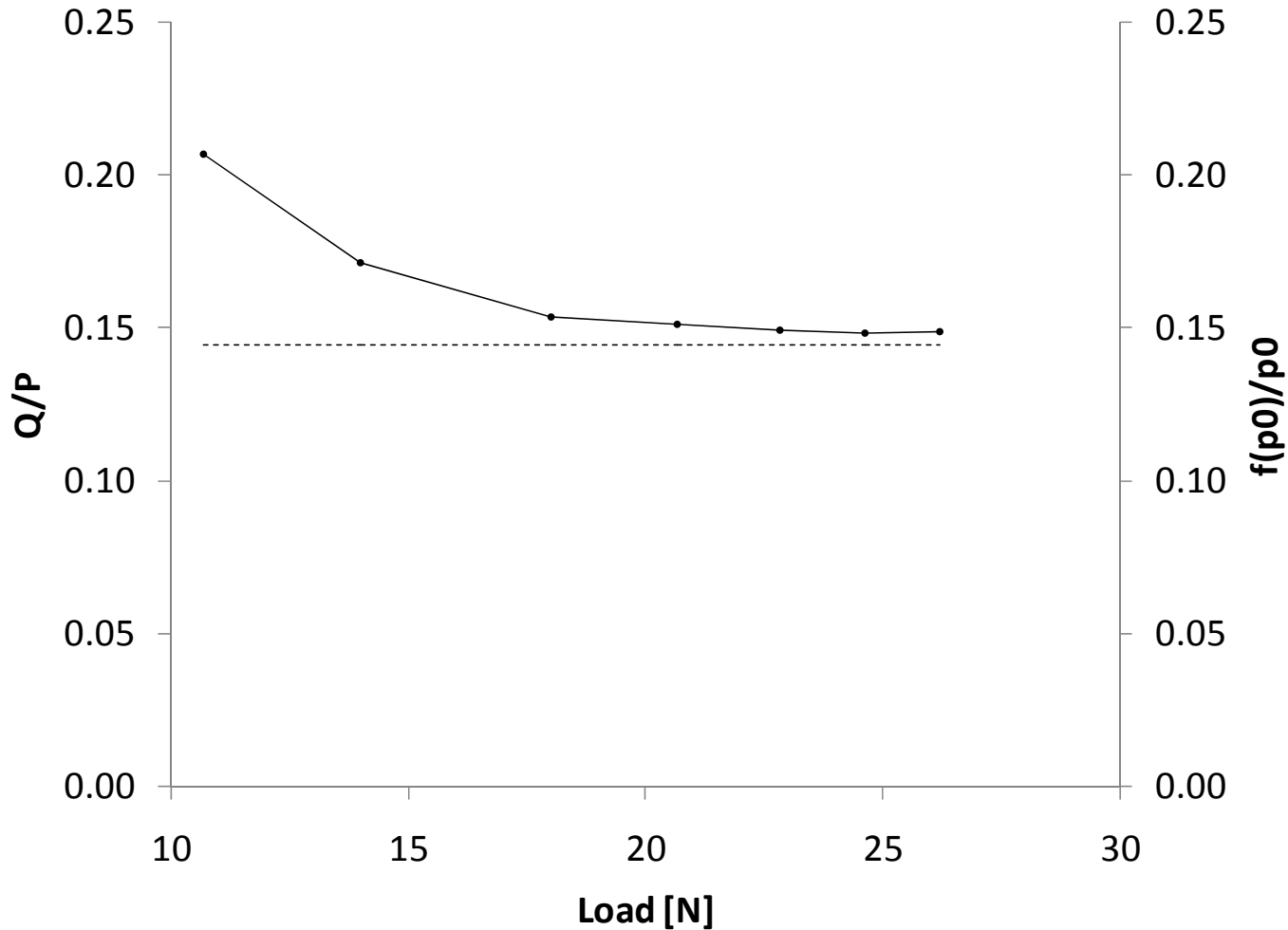
	Disc	Ball
Youngs Modulus	1.20E+08	2.07E+11
Poison Ratio	0.05	0.3
Radius		9.53E-03



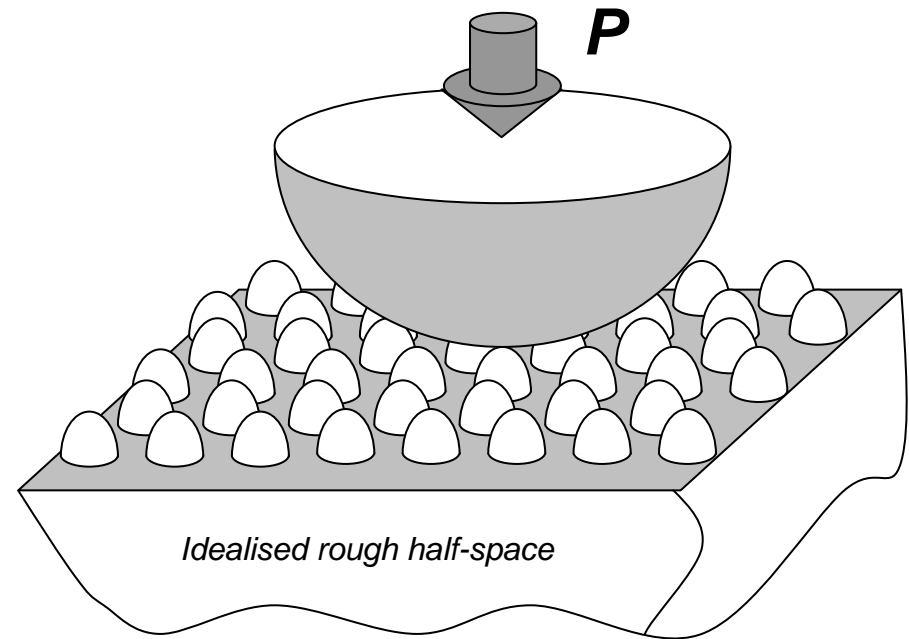
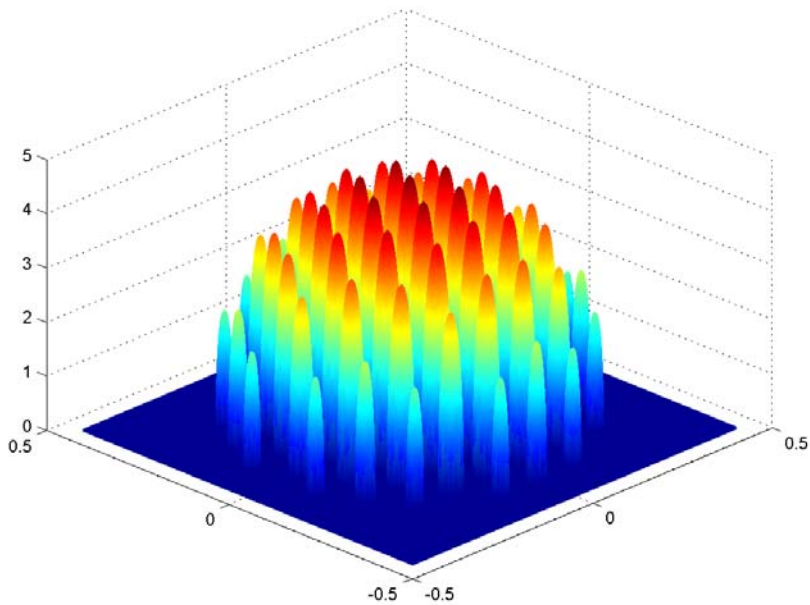
Pressure dependent friction?

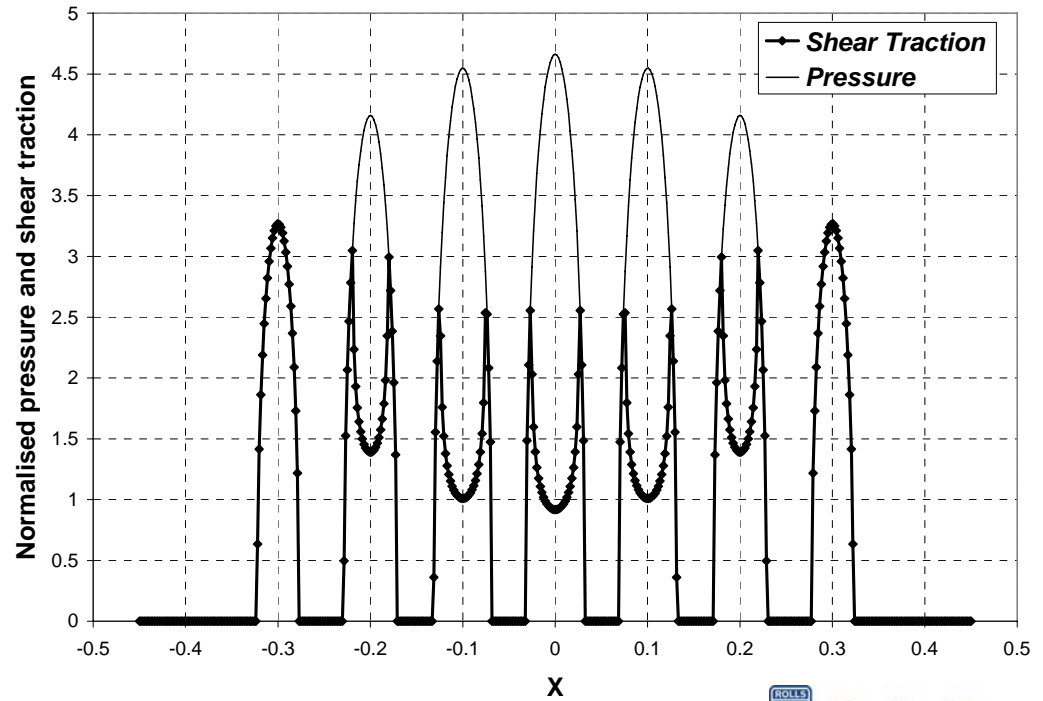
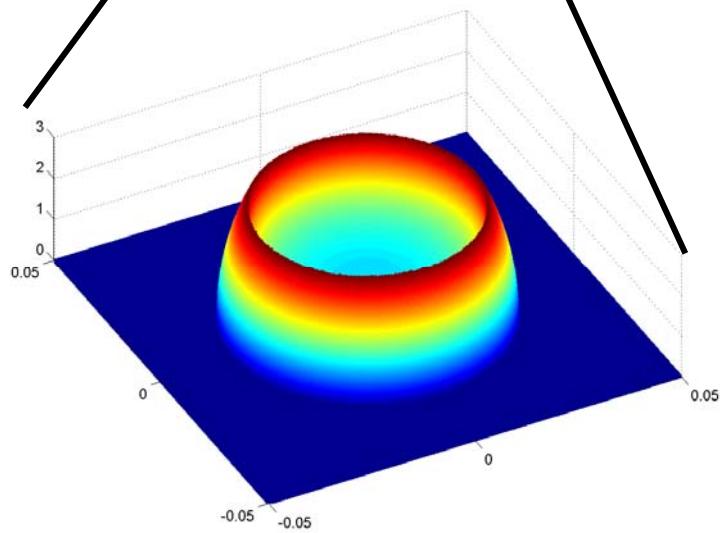
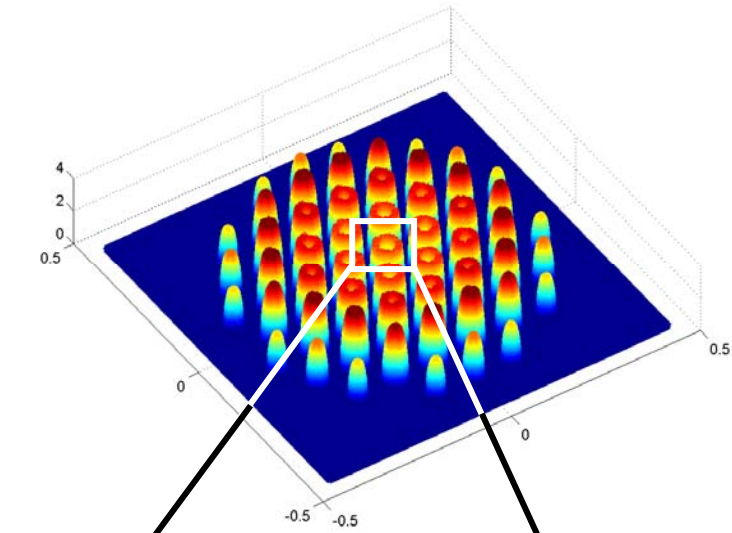
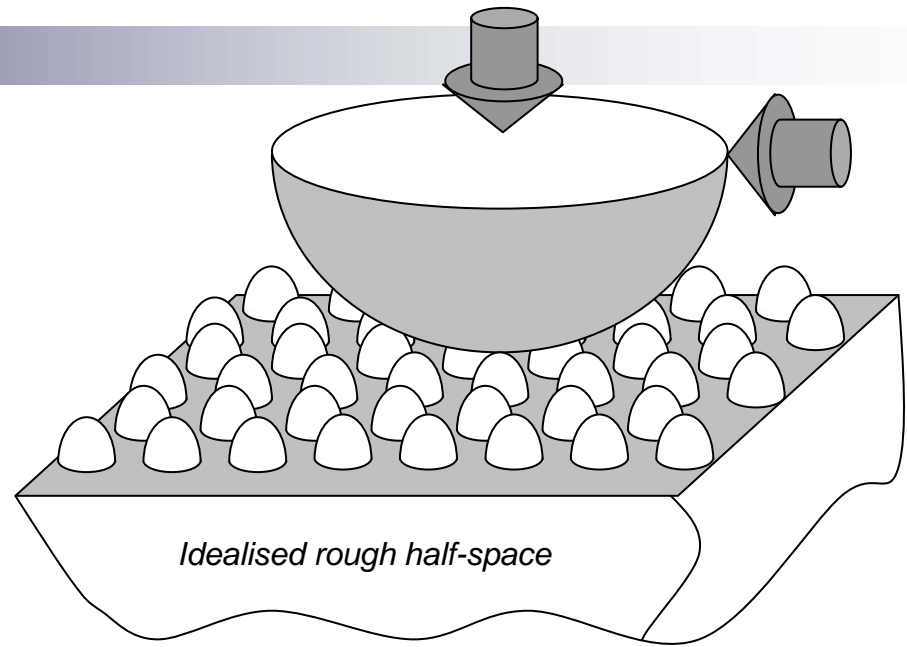


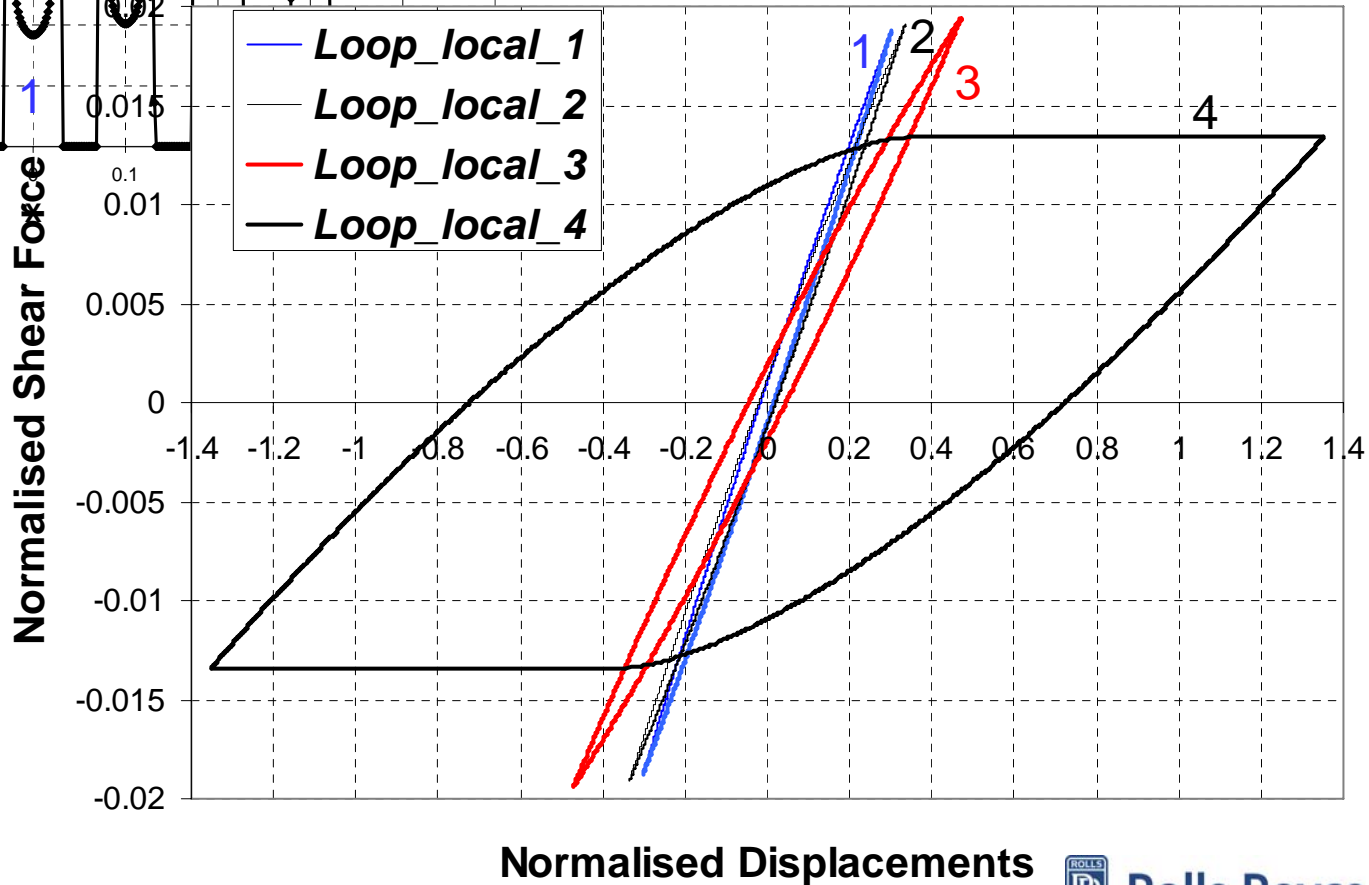
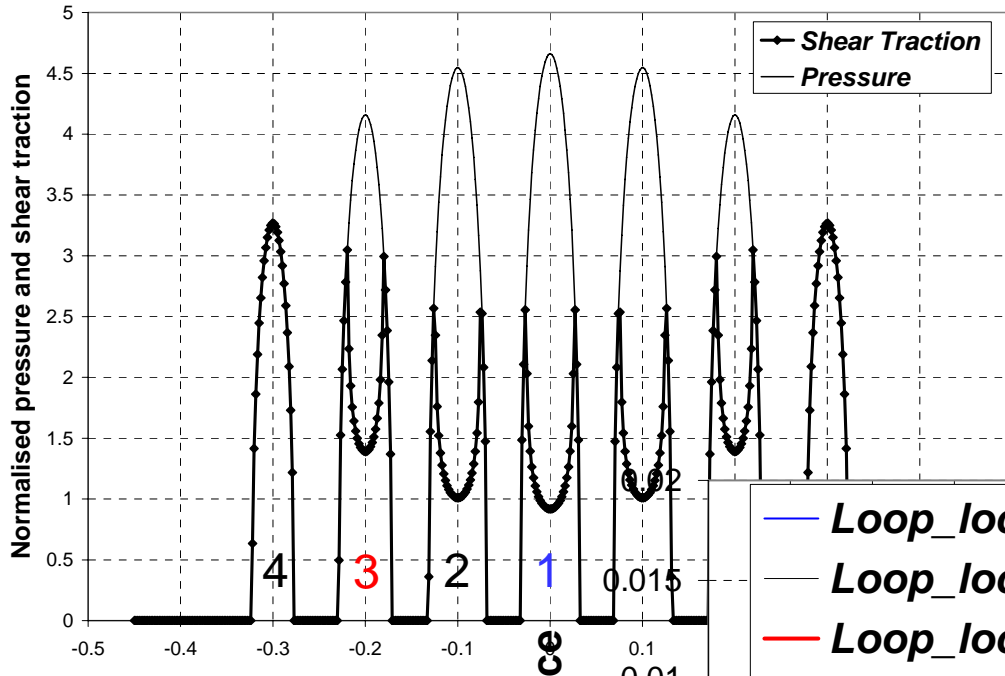
Pressure dependent friction?



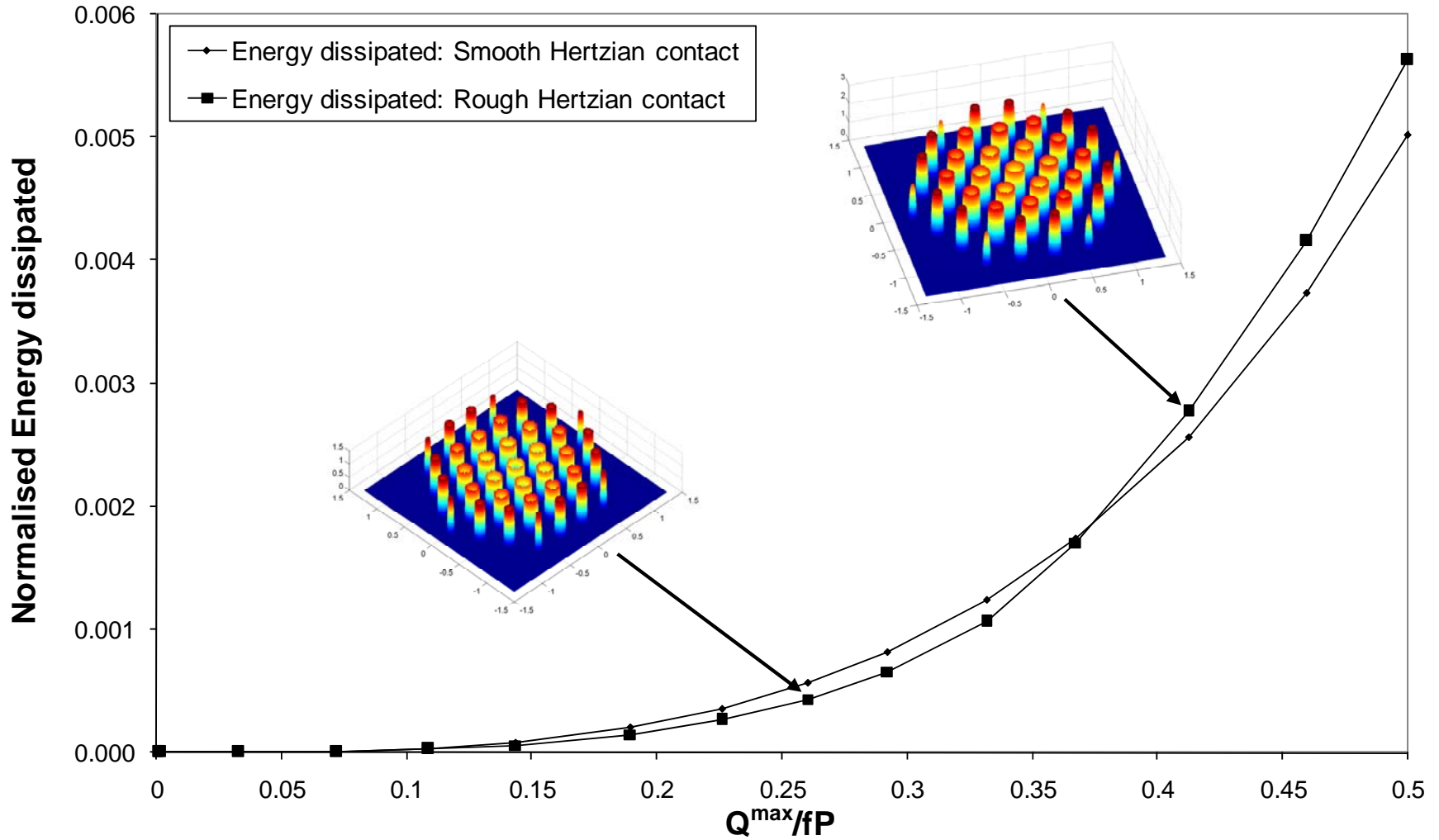
Energy Dissipation in Rough Contacts



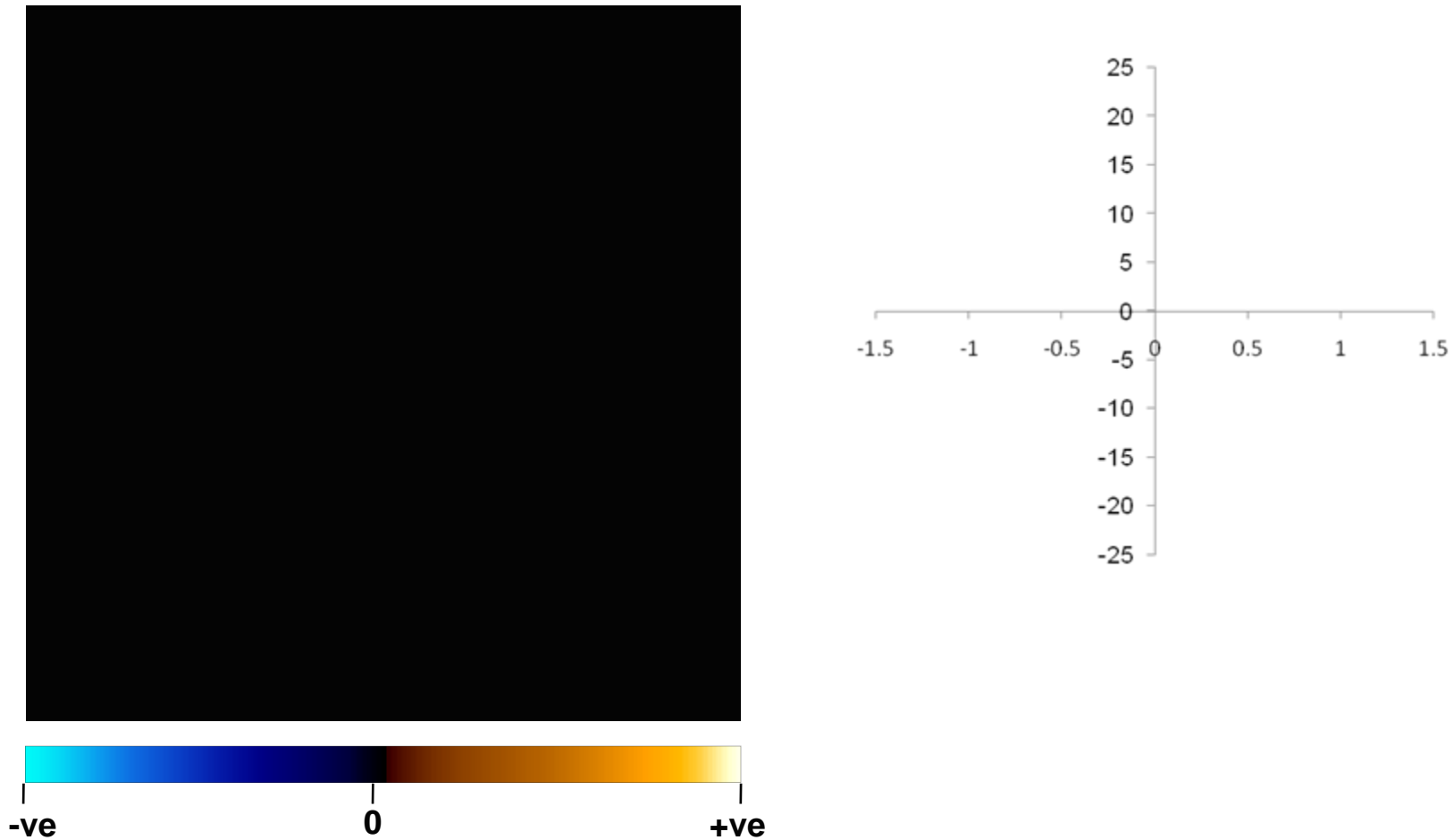




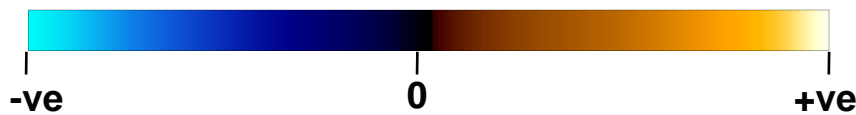
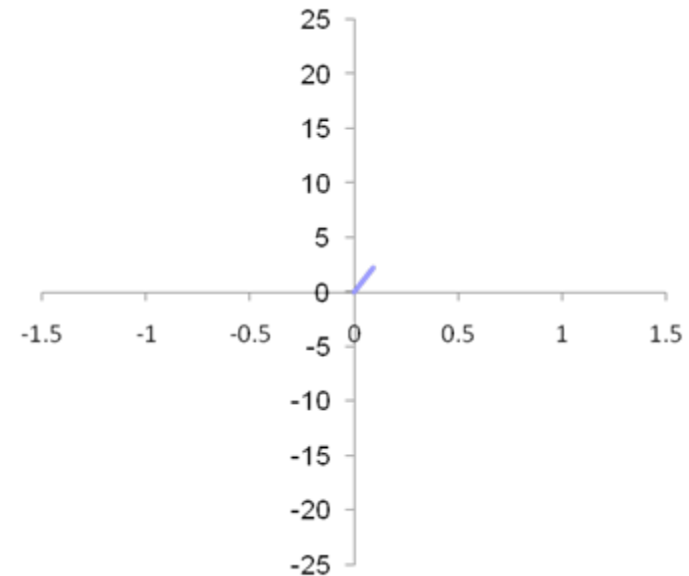
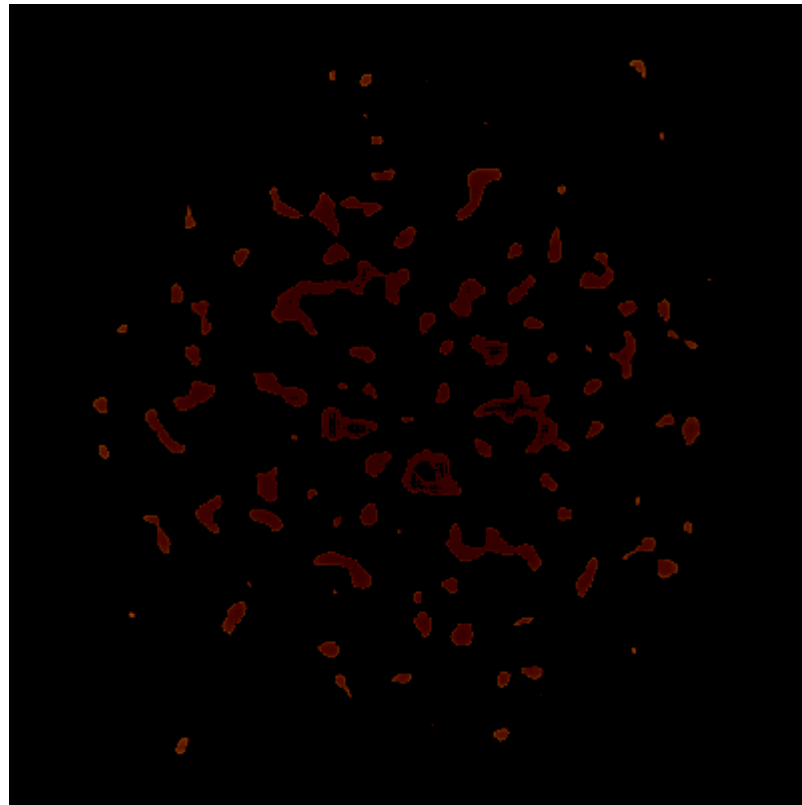
Normalised Displacements



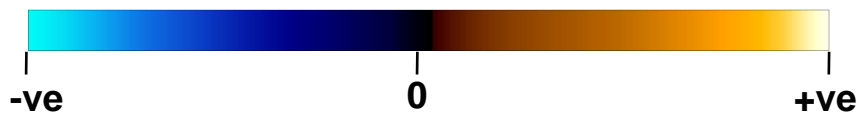
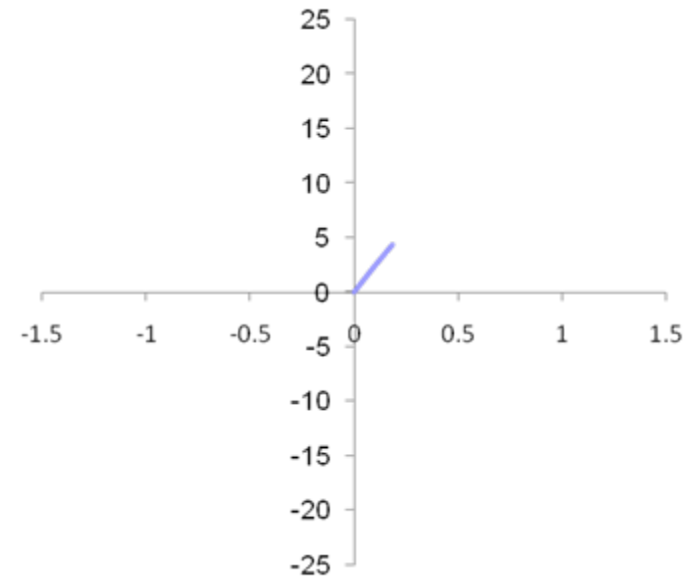
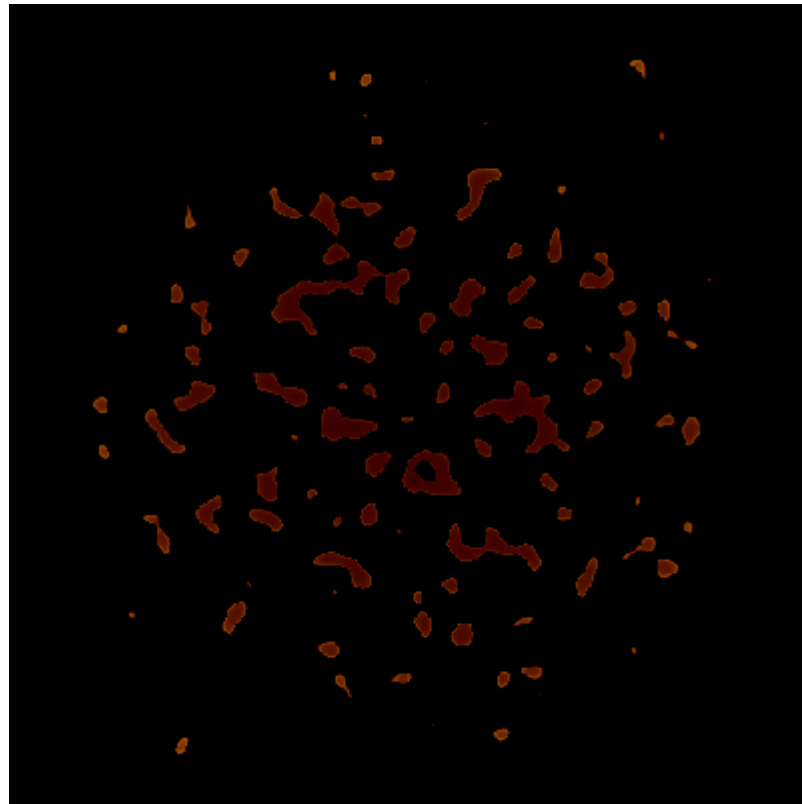
Rough surface – Typical friction loop (traction)



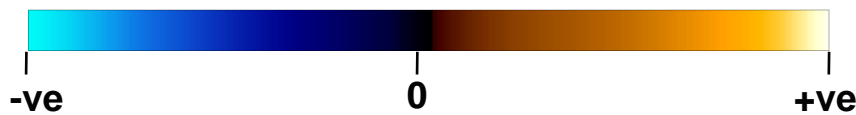
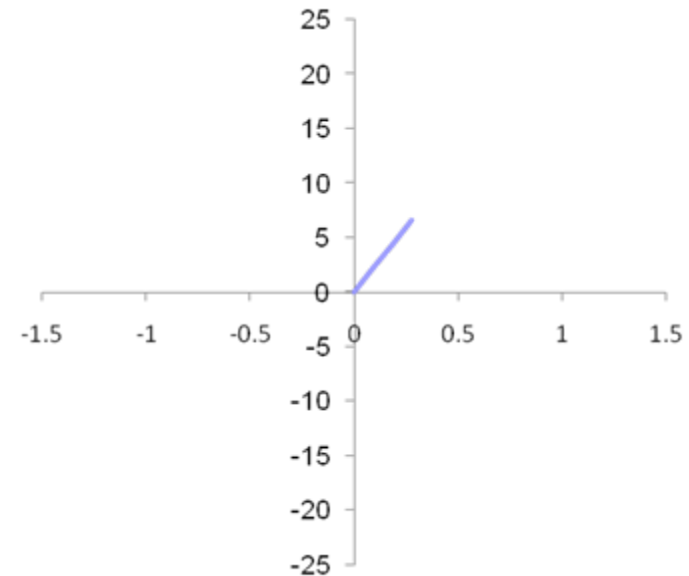
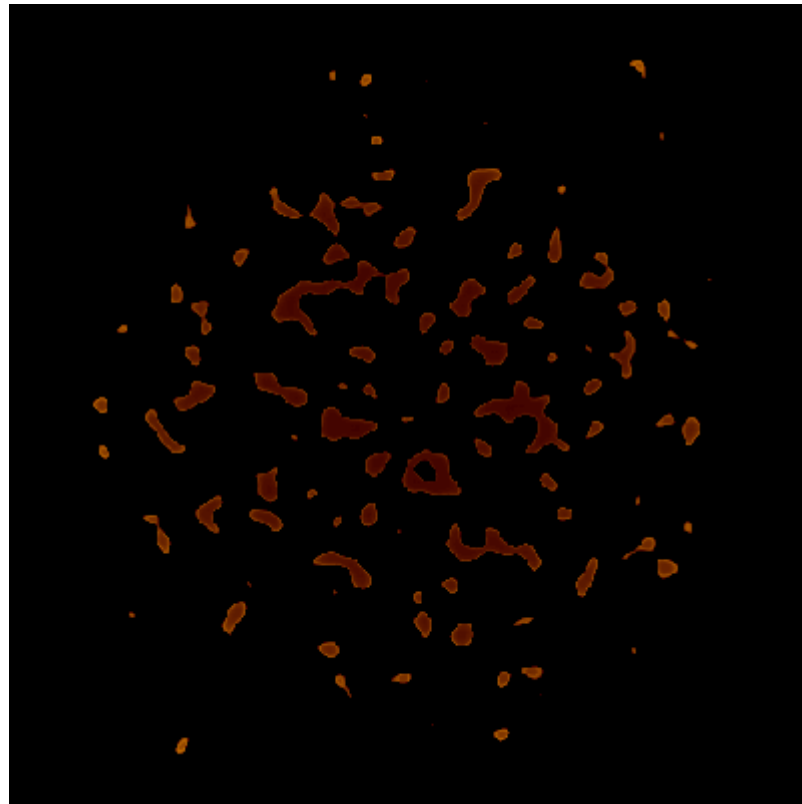
Rough surface – Typical friction loop (traction)



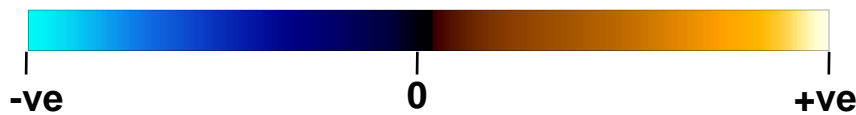
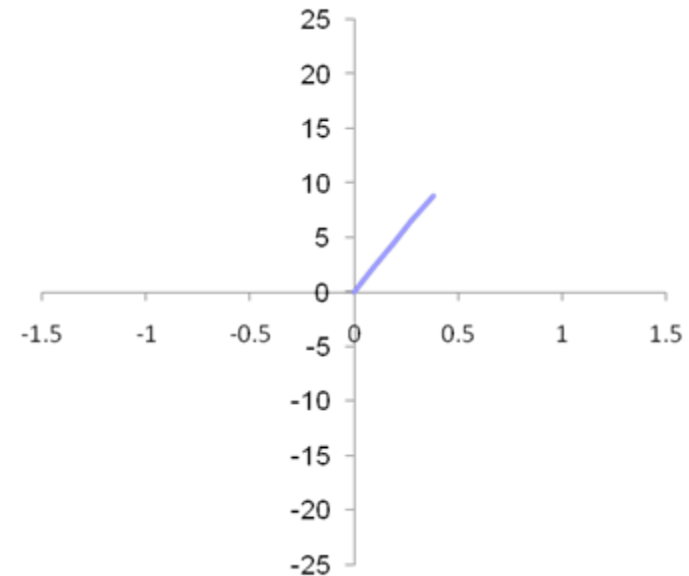
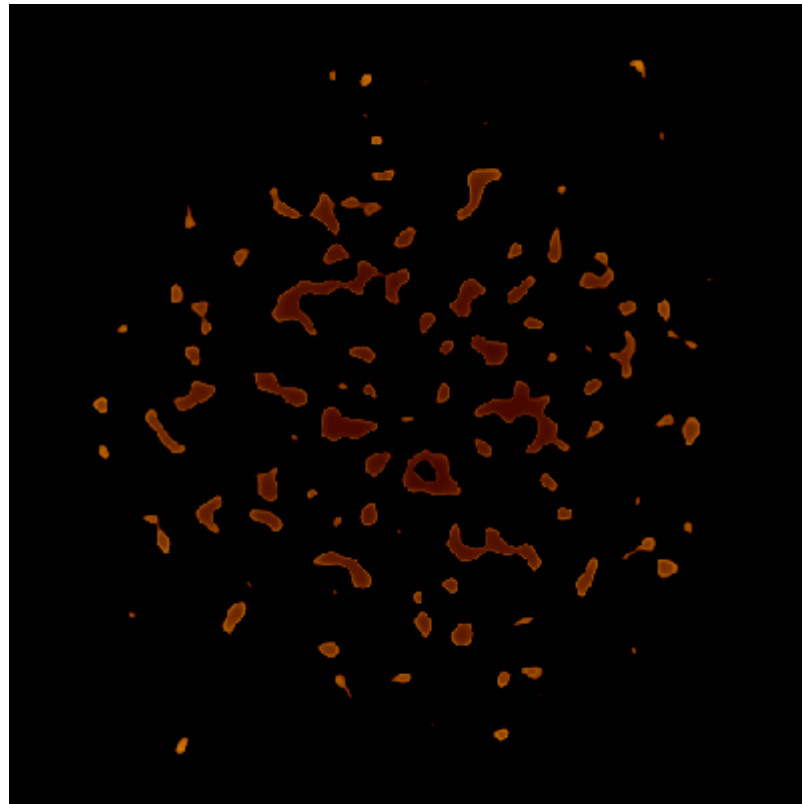
Rough surface – Typical friction loop (traction)



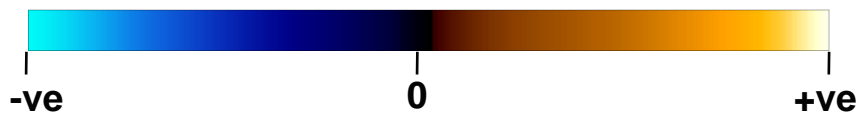
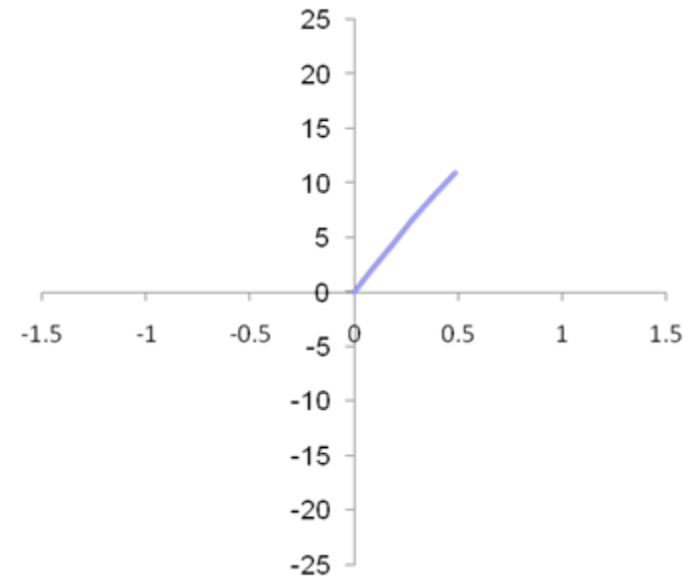
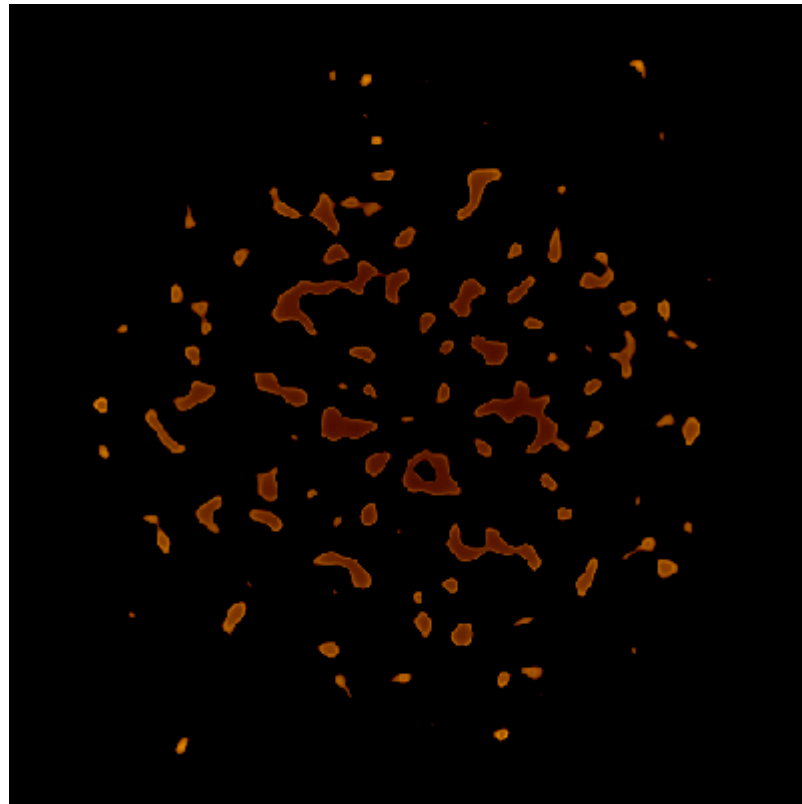
Rough surface – Typical friction loop (traction)



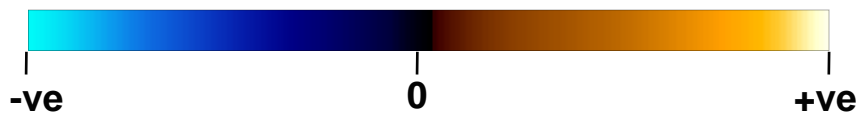
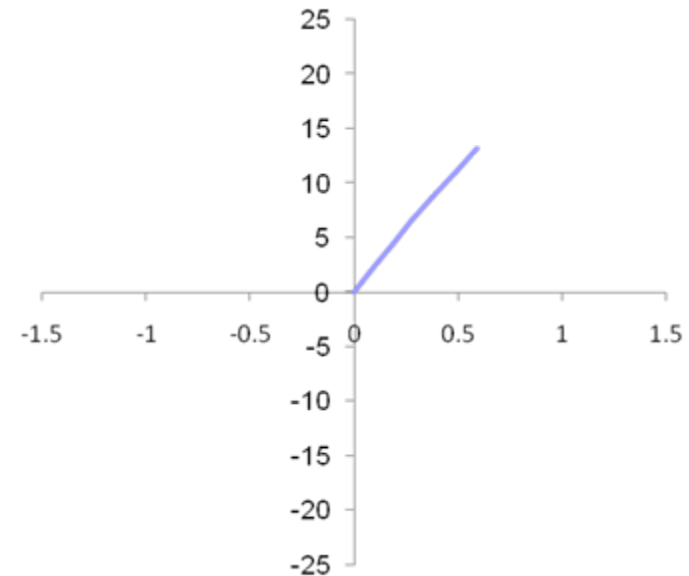
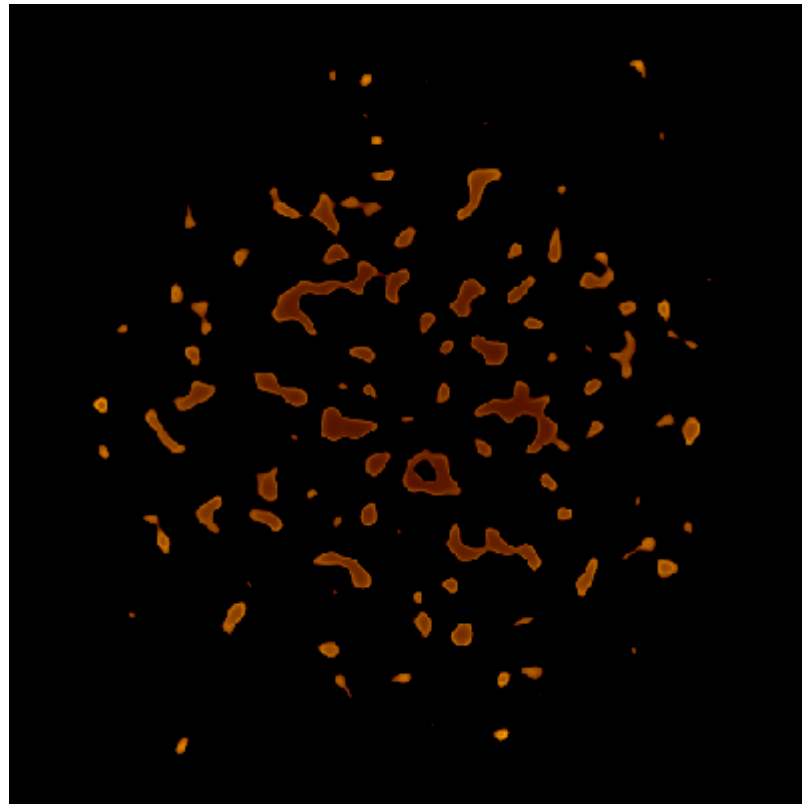
Rough surface – Typical friction loop (traction)



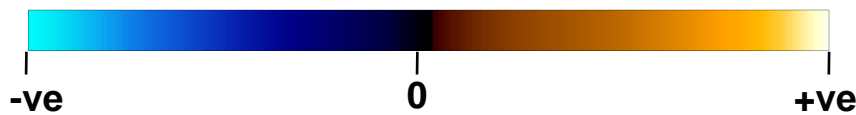
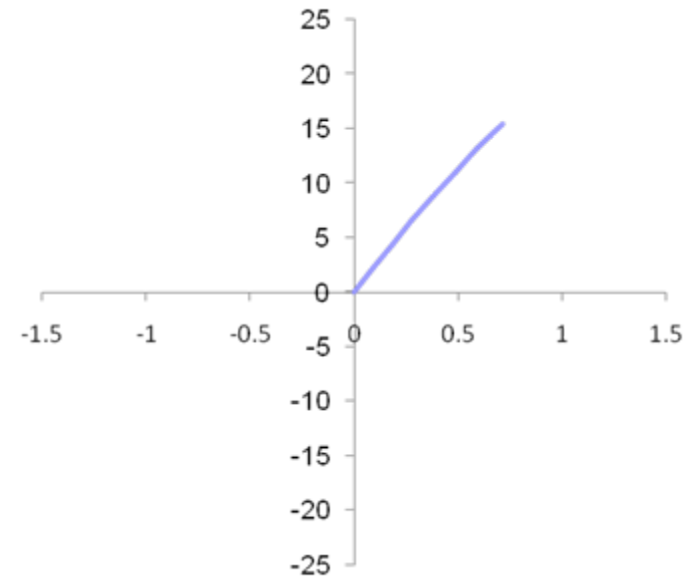
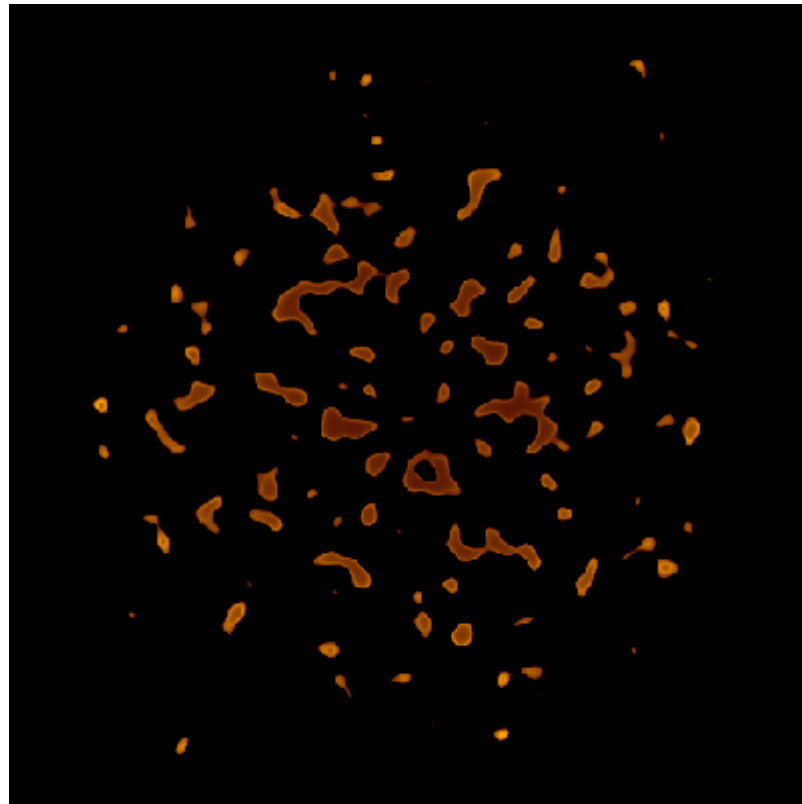
Rough surface – Typical friction loop (traction)



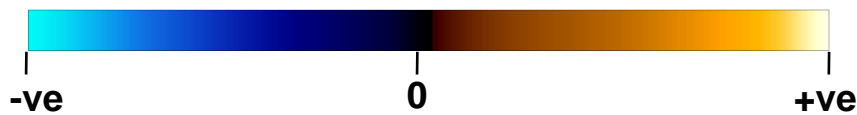
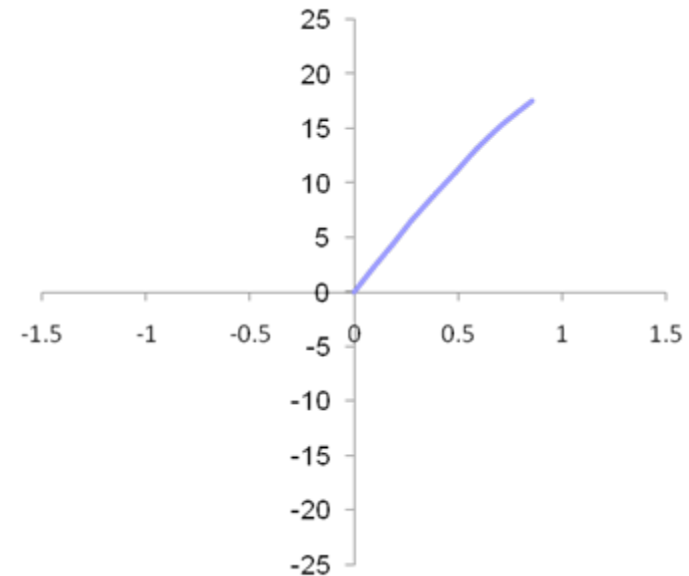
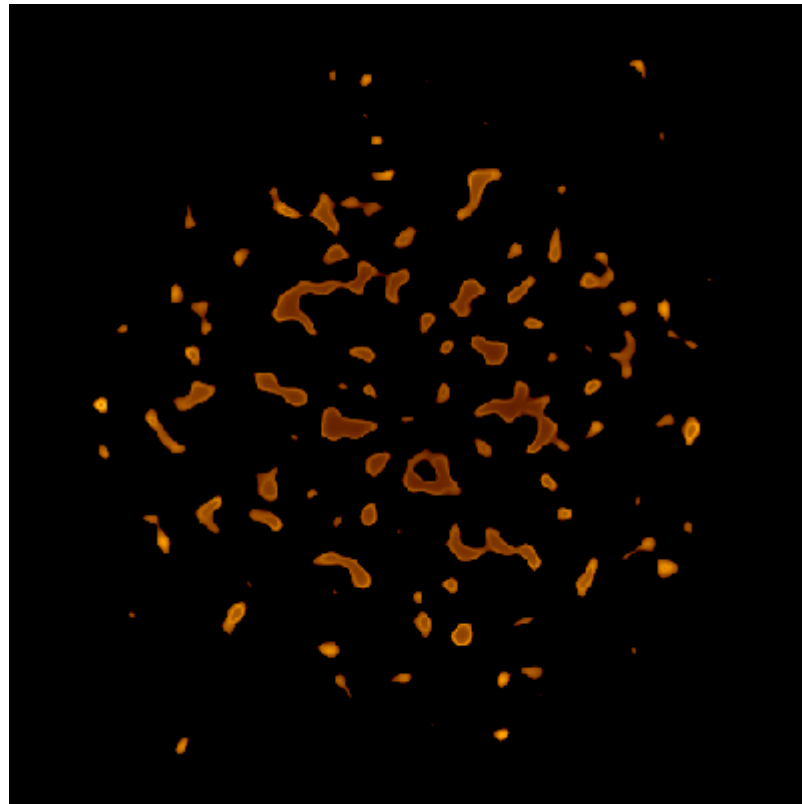
Rough surface – Typical friction loop (traction)



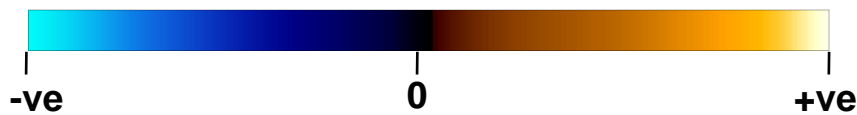
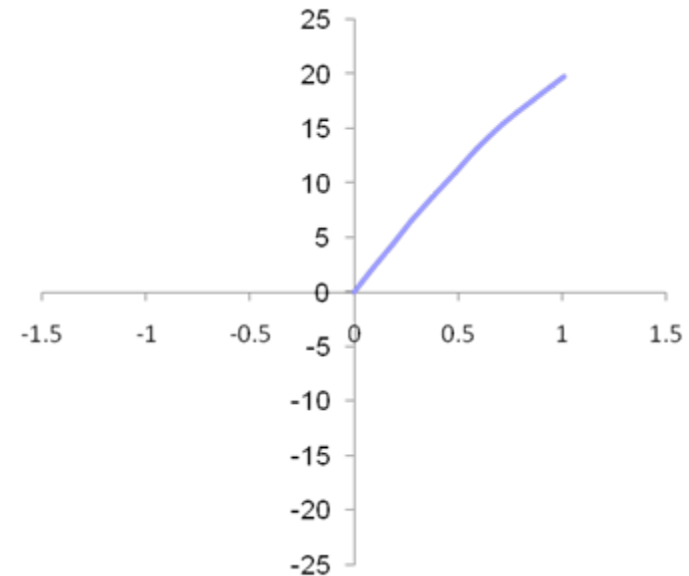
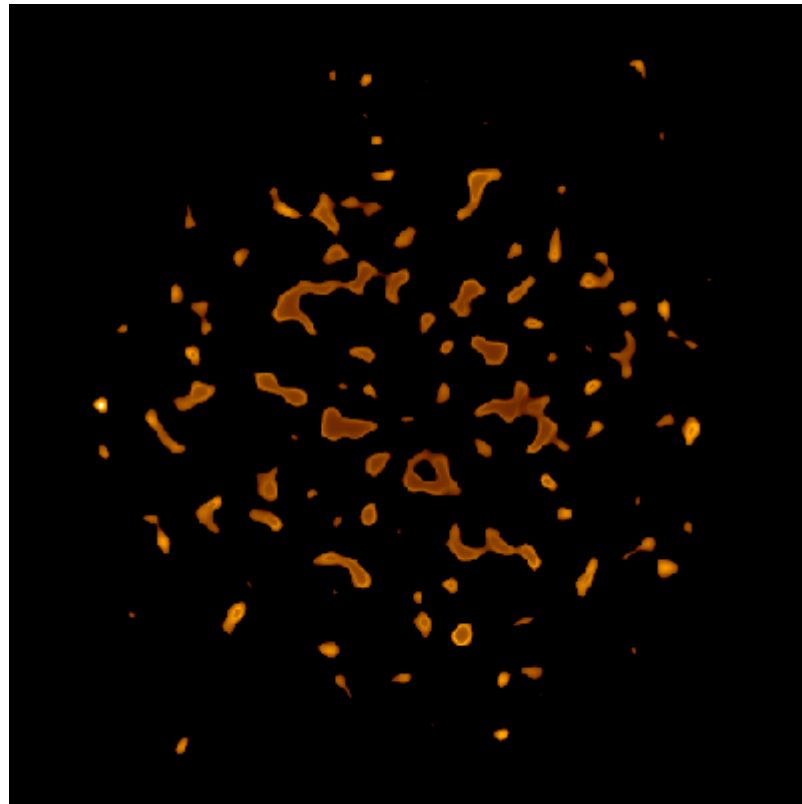
Rough surface – Typical friction loop (traction)



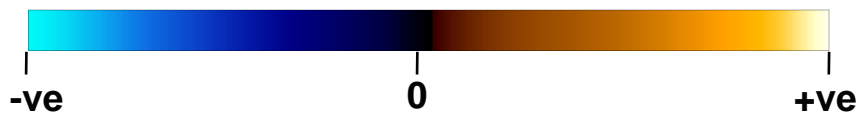
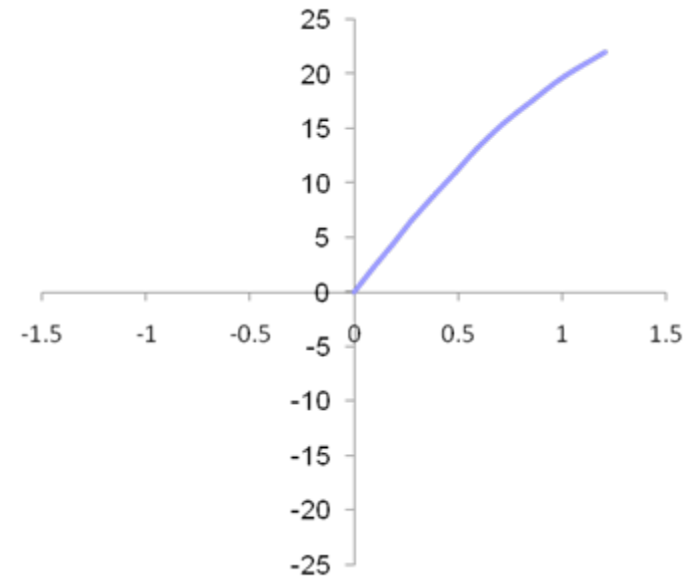
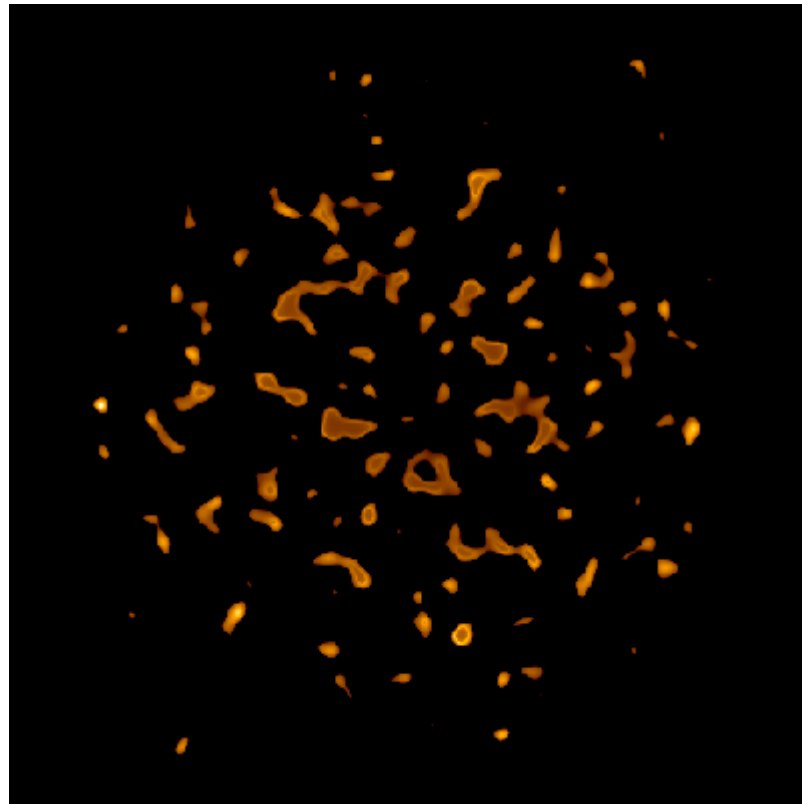
Rough surface – Typical friction loop (traction)



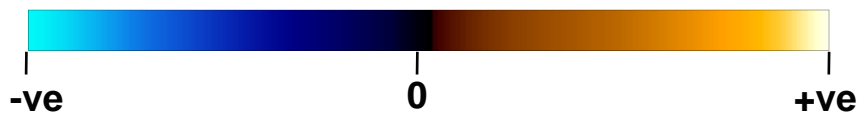
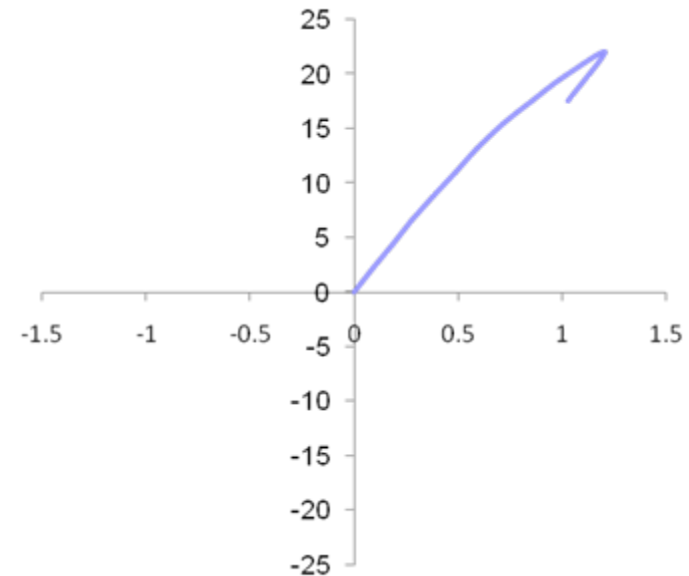
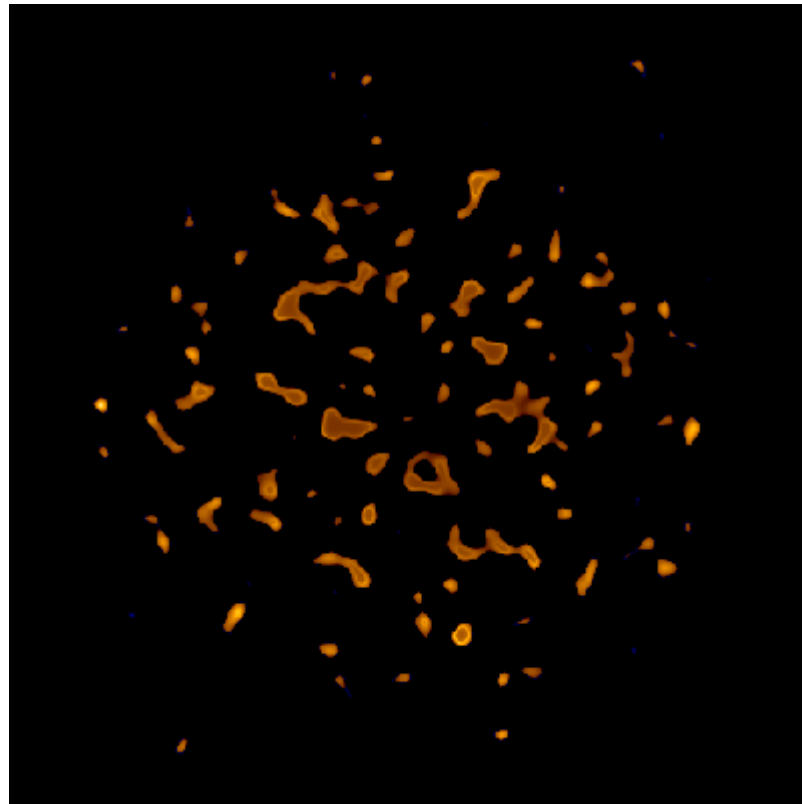
Rough surface – Typical friction loop (traction)



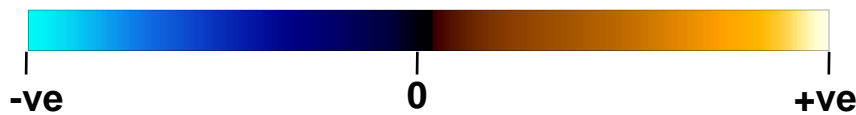
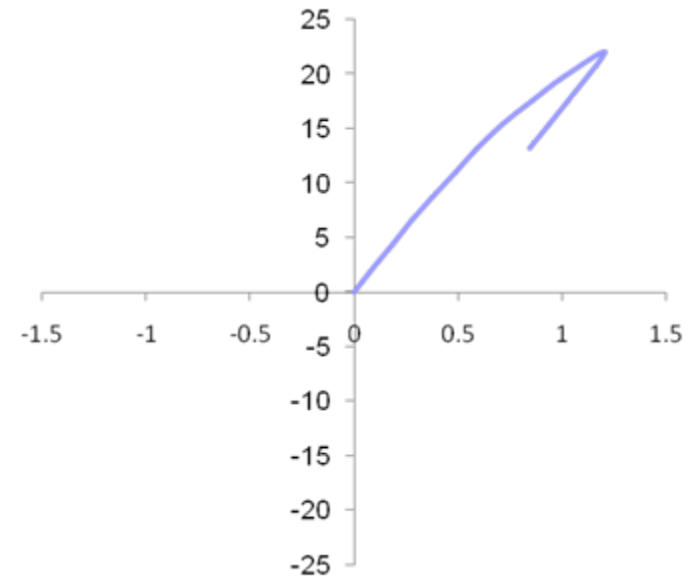
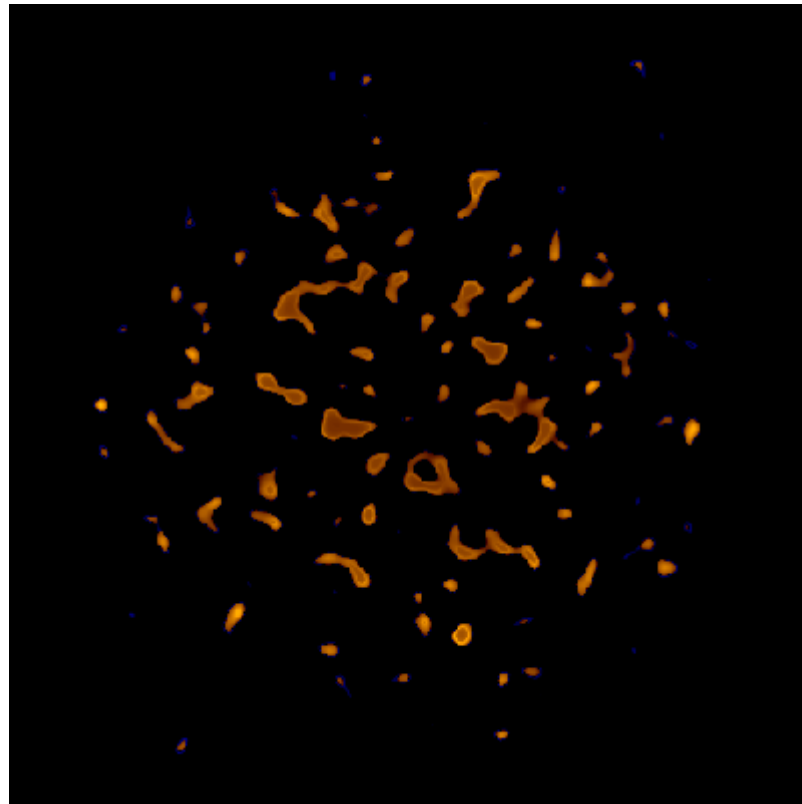
Rough surface – Typical friction loop (traction)



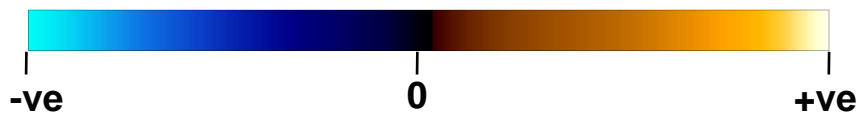
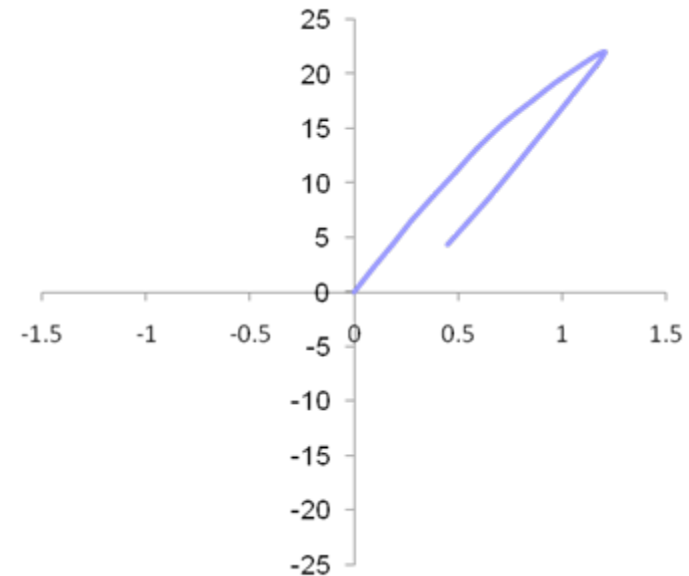
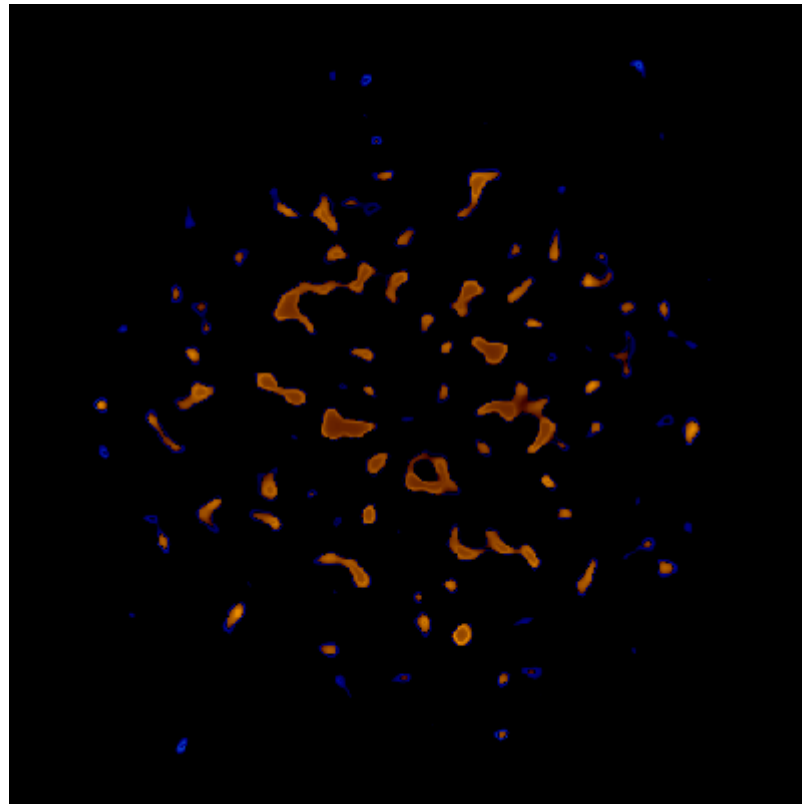
Rough surface – Typical friction loop (traction)



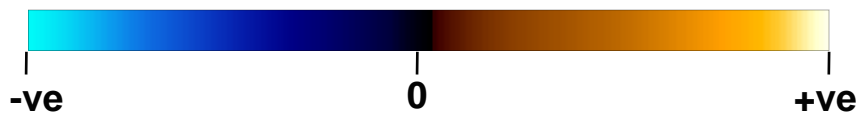
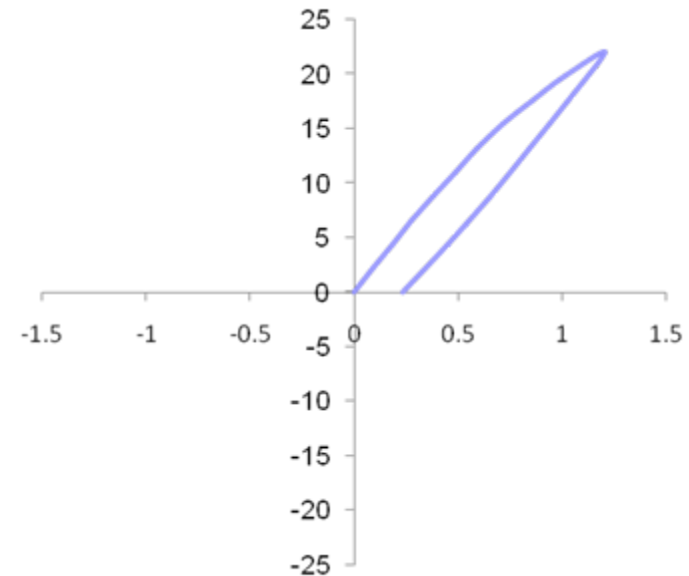
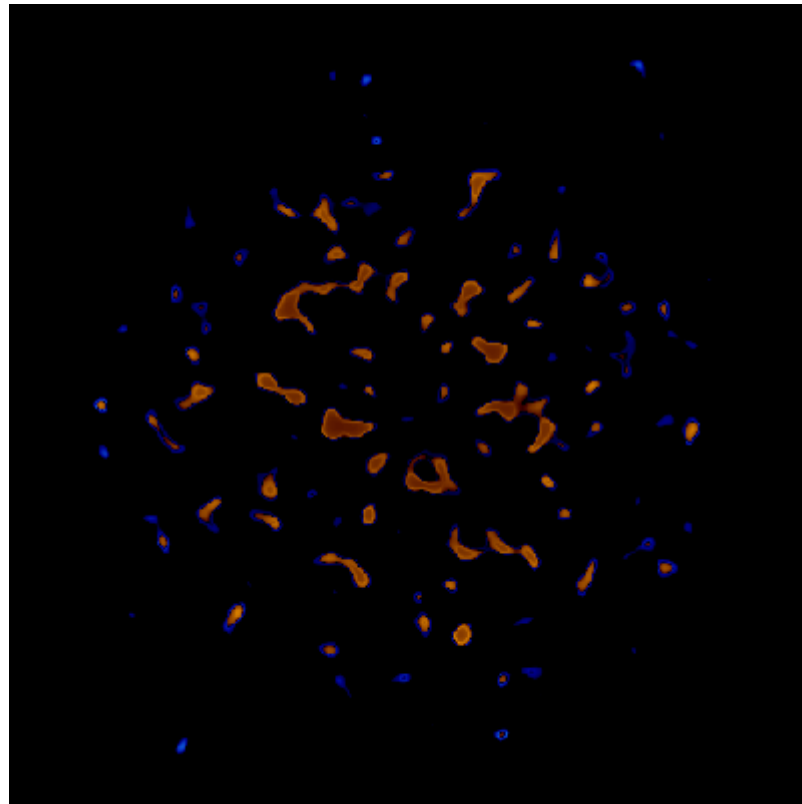
Rough surface – Typical friction loop (traction)



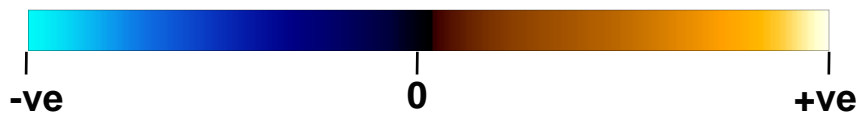
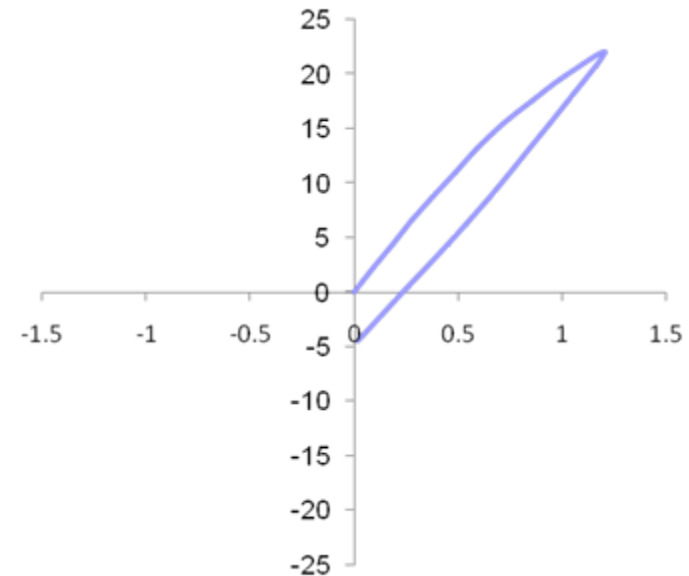
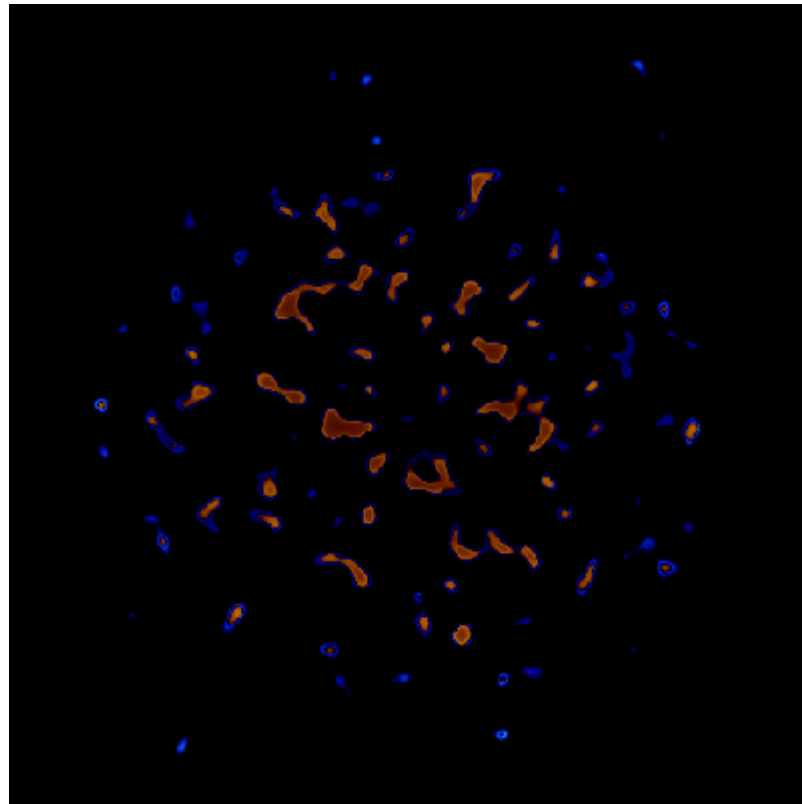
Rough surface – Typical friction loop (traction)



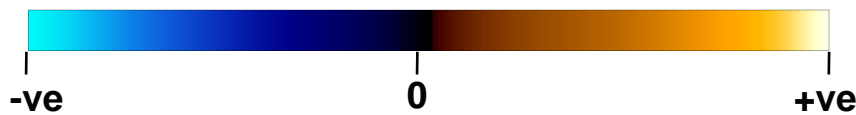
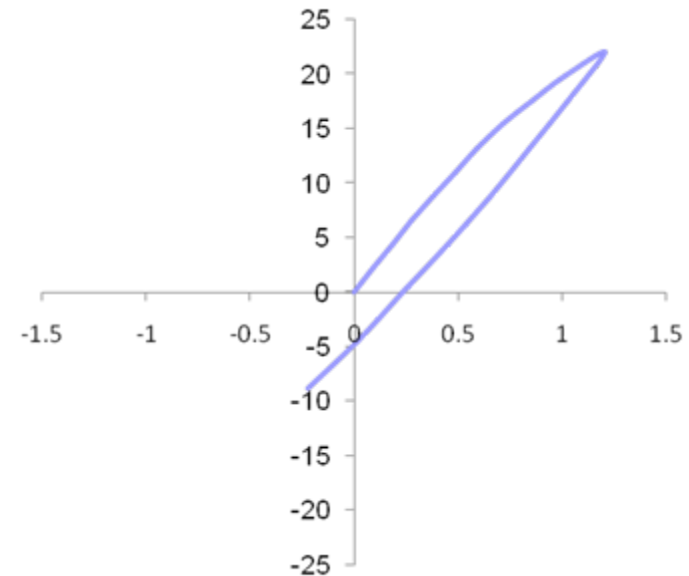
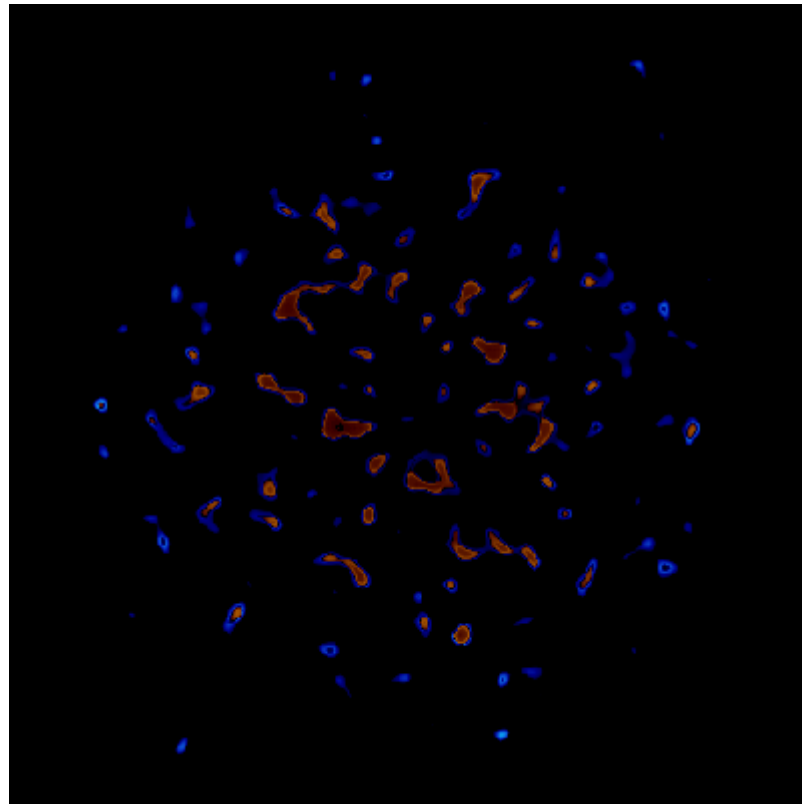
Rough surface – Typical friction loop (traction)



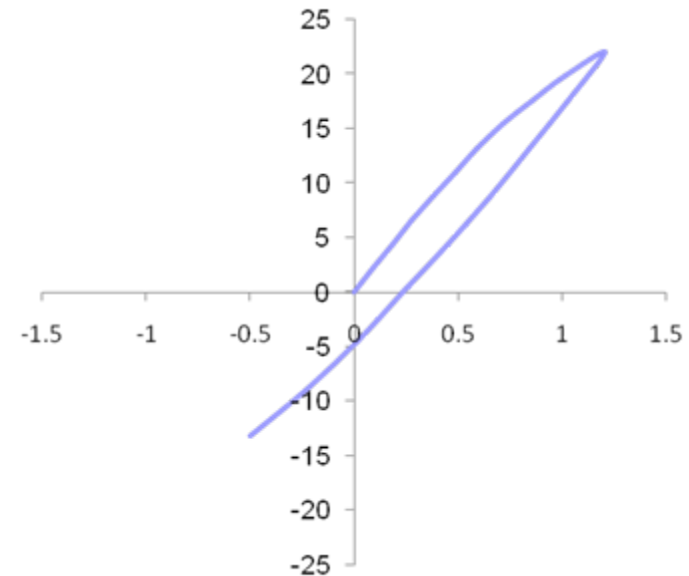
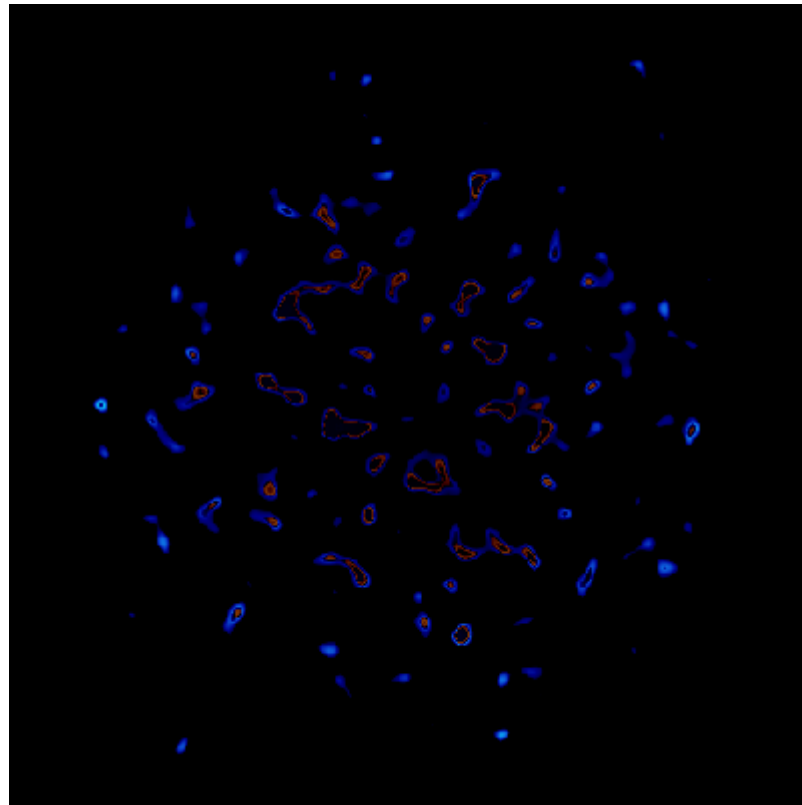
Rough surface – Typical friction loop (traction)



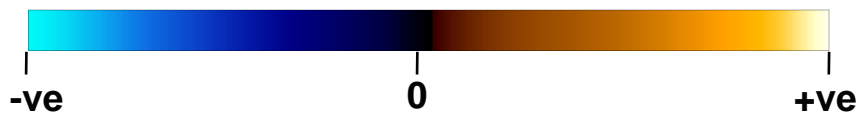
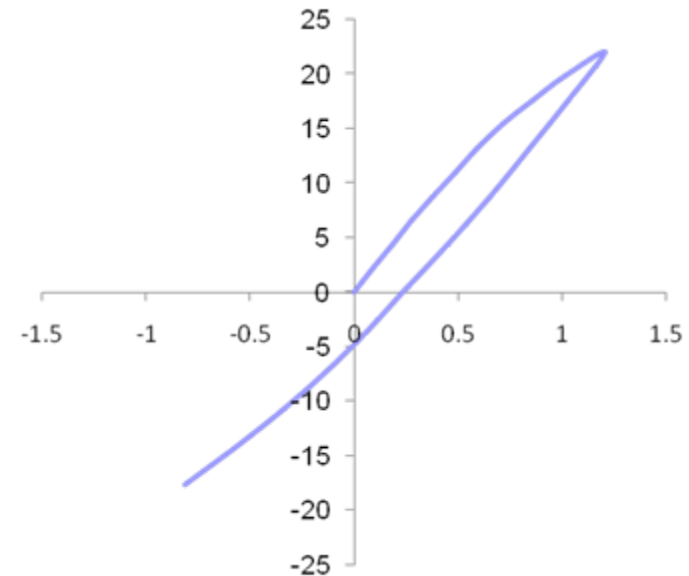
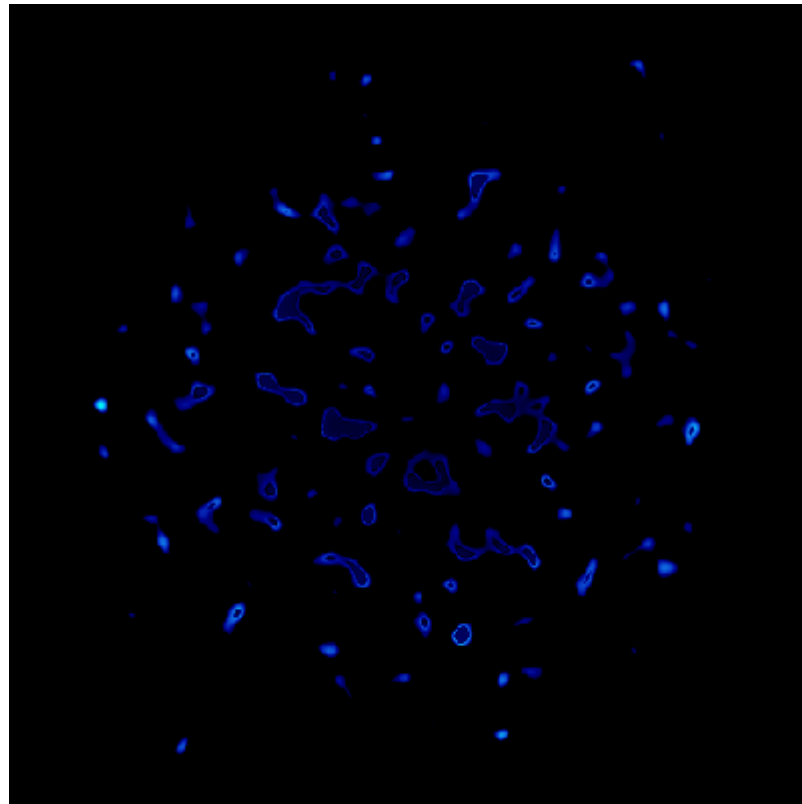
Rough surface – Typical friction loop (traction)



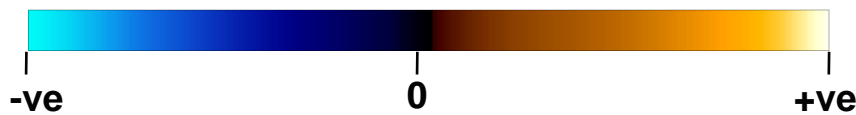
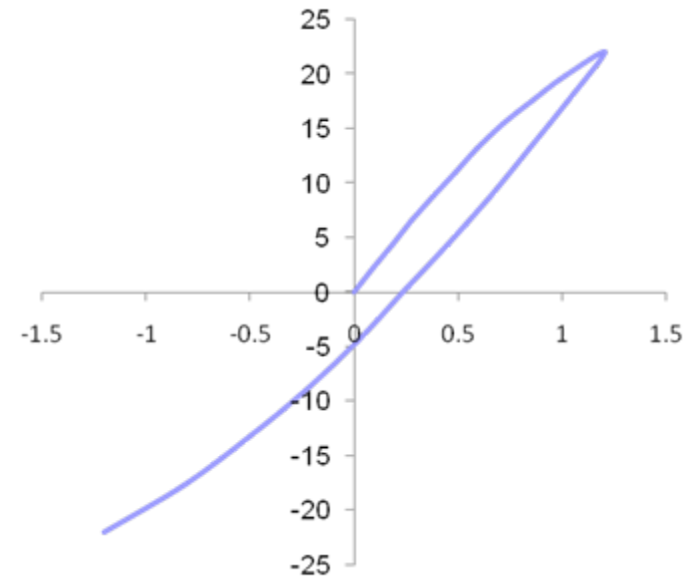
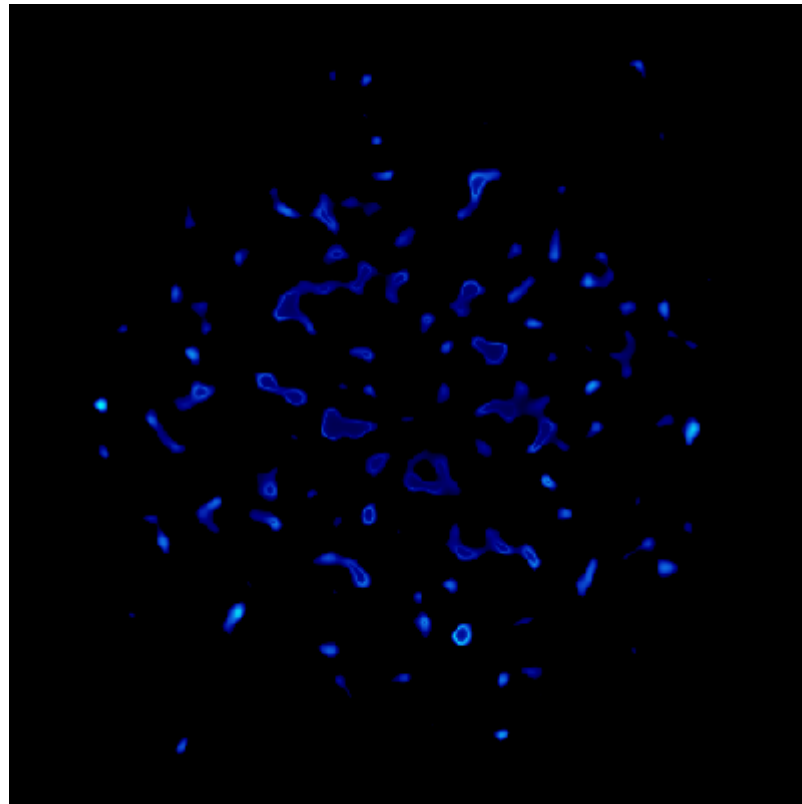
Rough surface – Typical friction loop (traction)



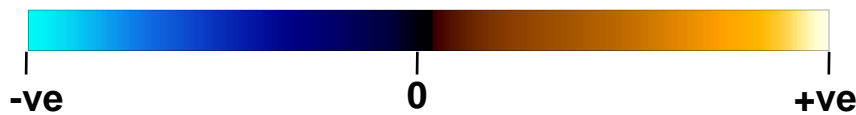
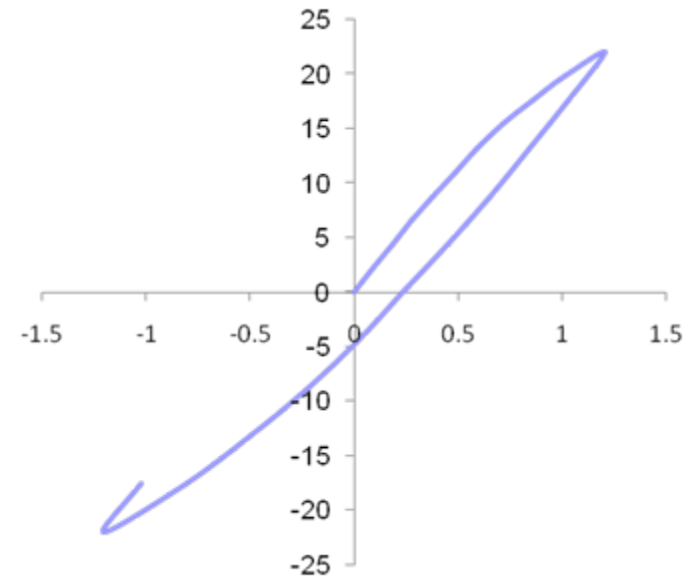
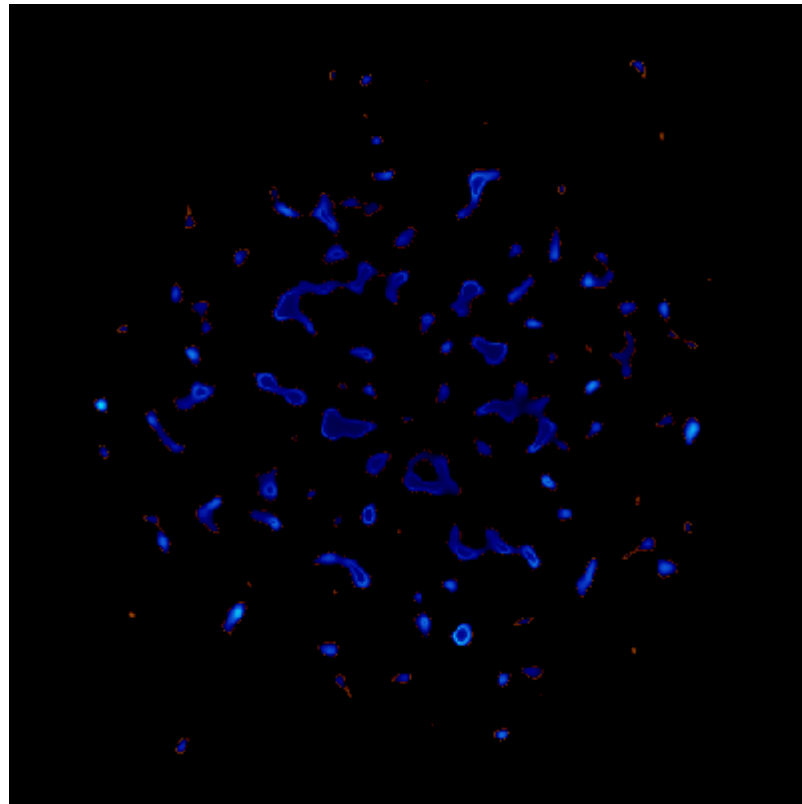
Rough surface – Typical friction loop (traction)



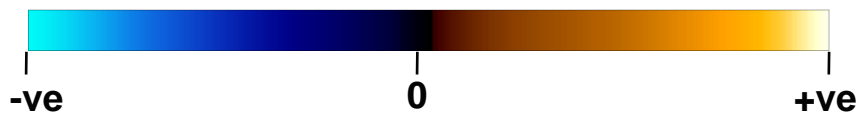
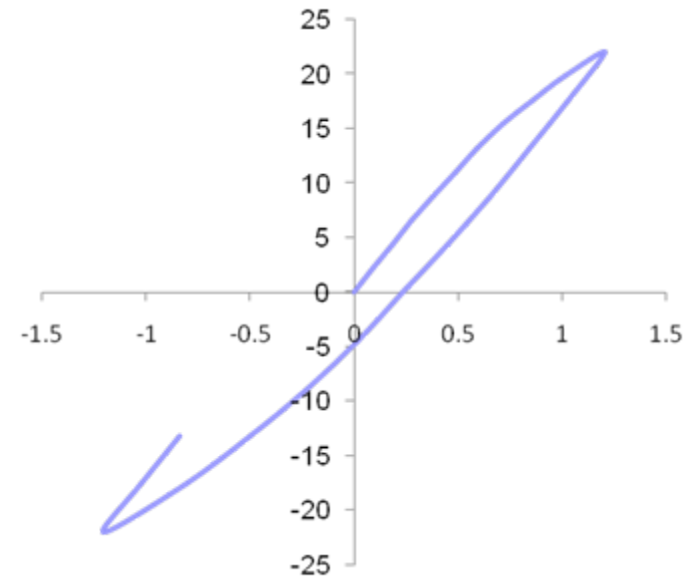
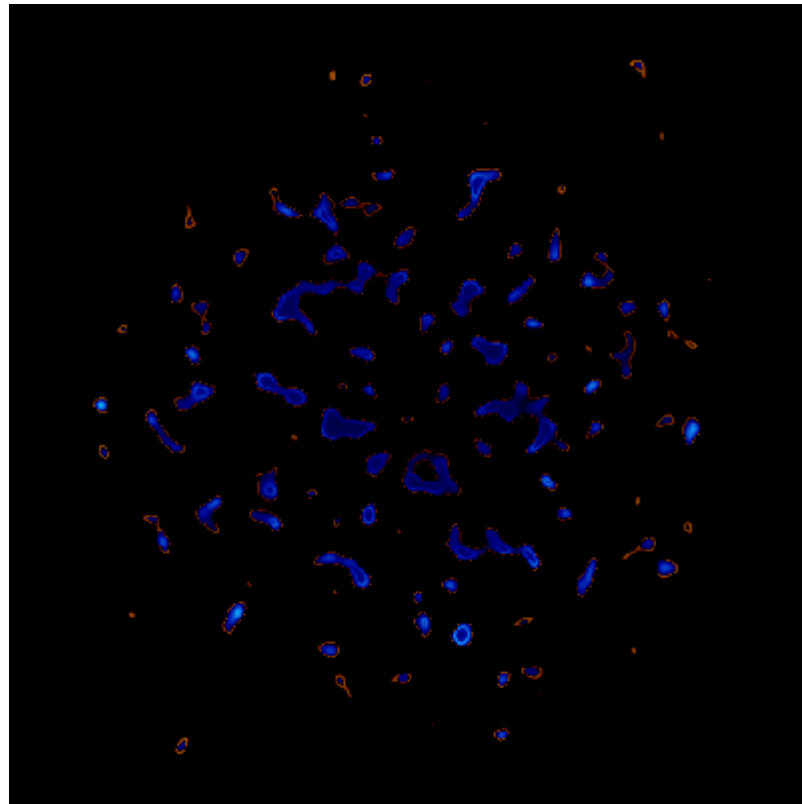
Rough surface – Typical friction loop (traction)



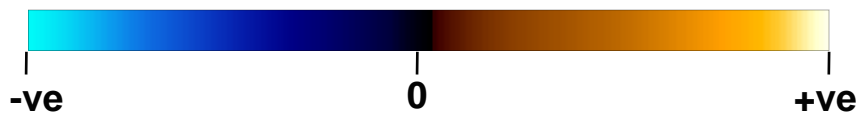
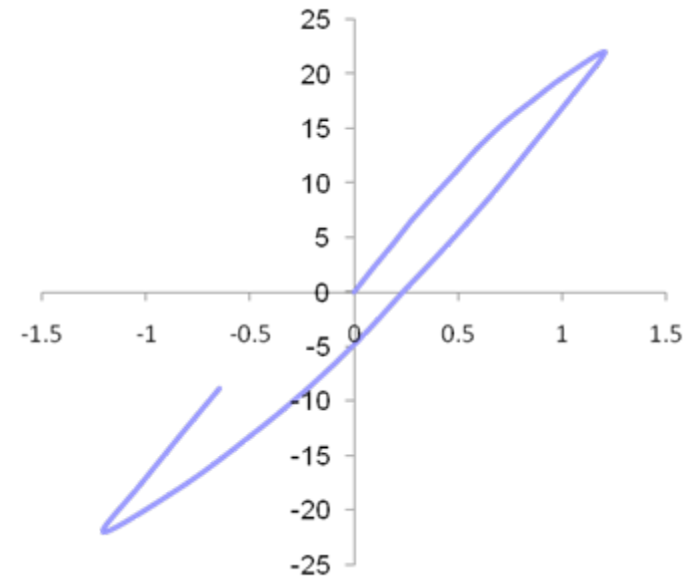
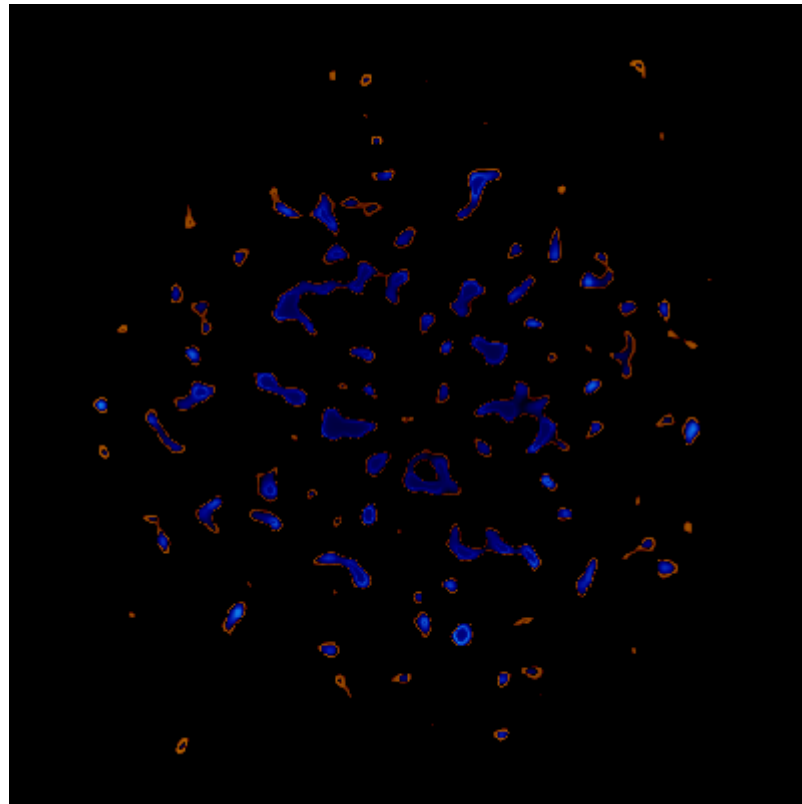
Rough surface – Typical friction loop (traction)



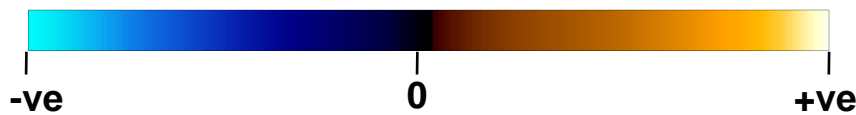
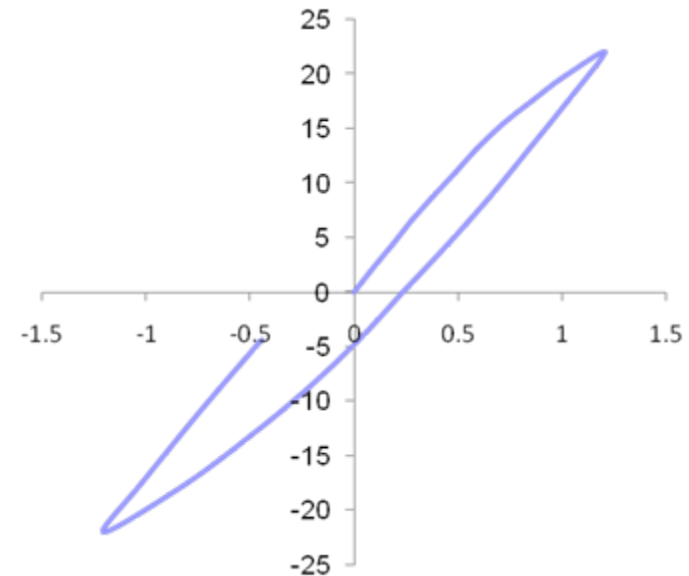
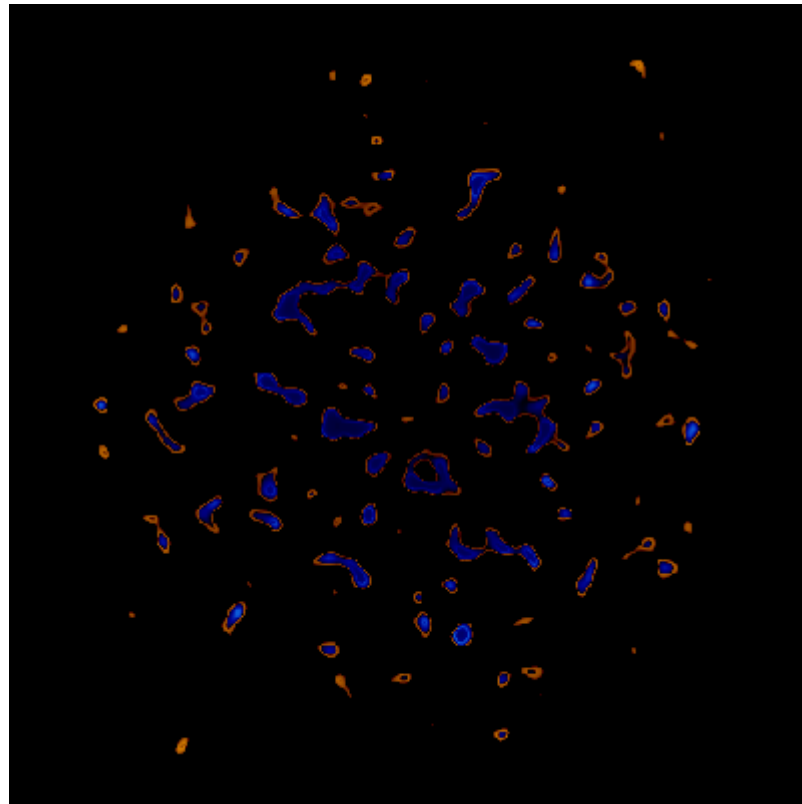
Rough surface – Typical friction loop (traction)



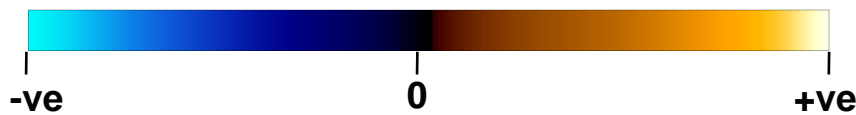
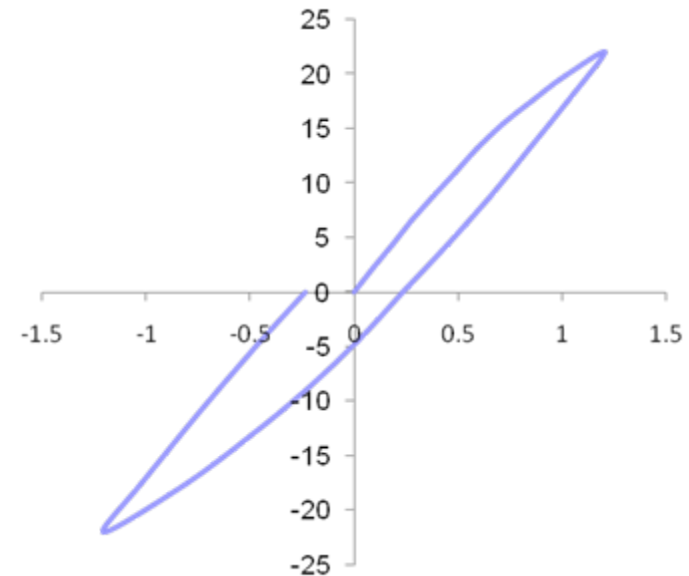
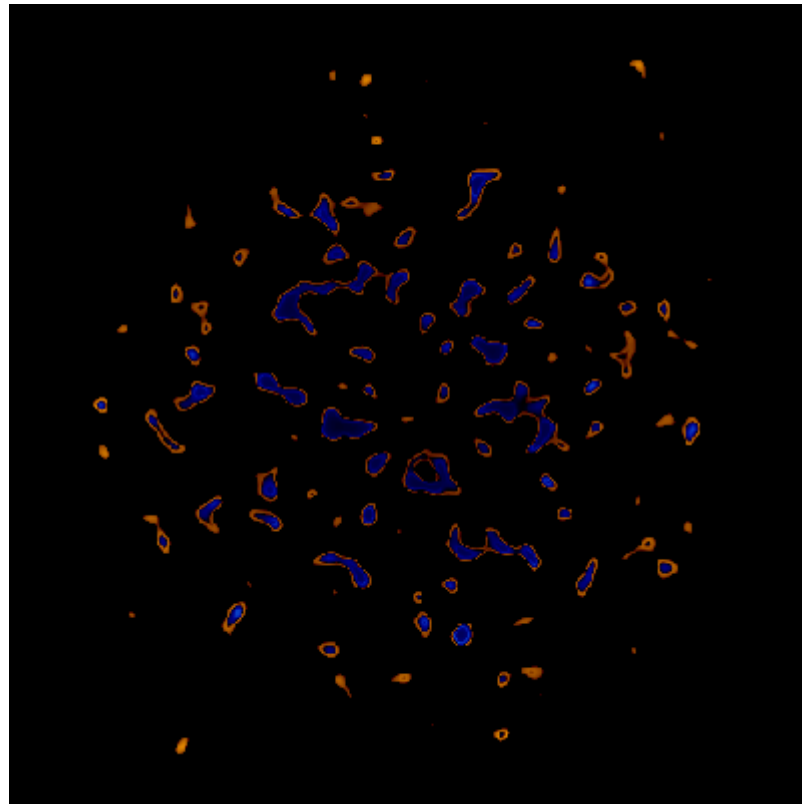
Rough surface – Typical friction loop (traction)



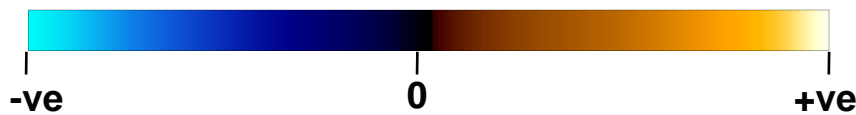
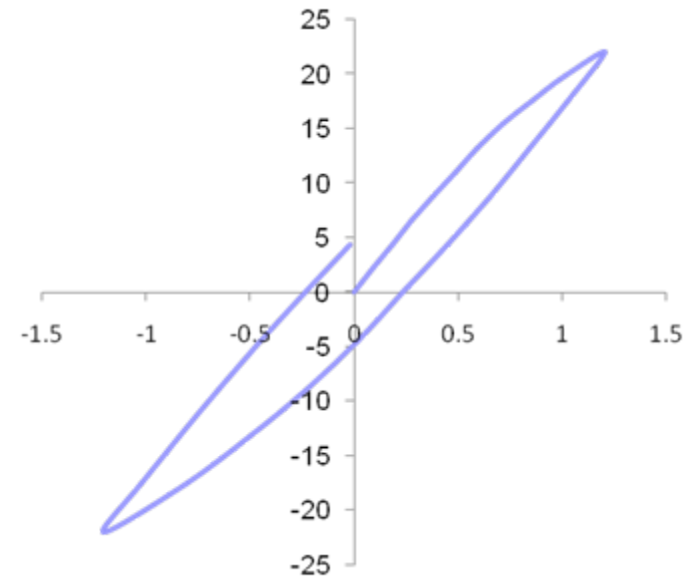
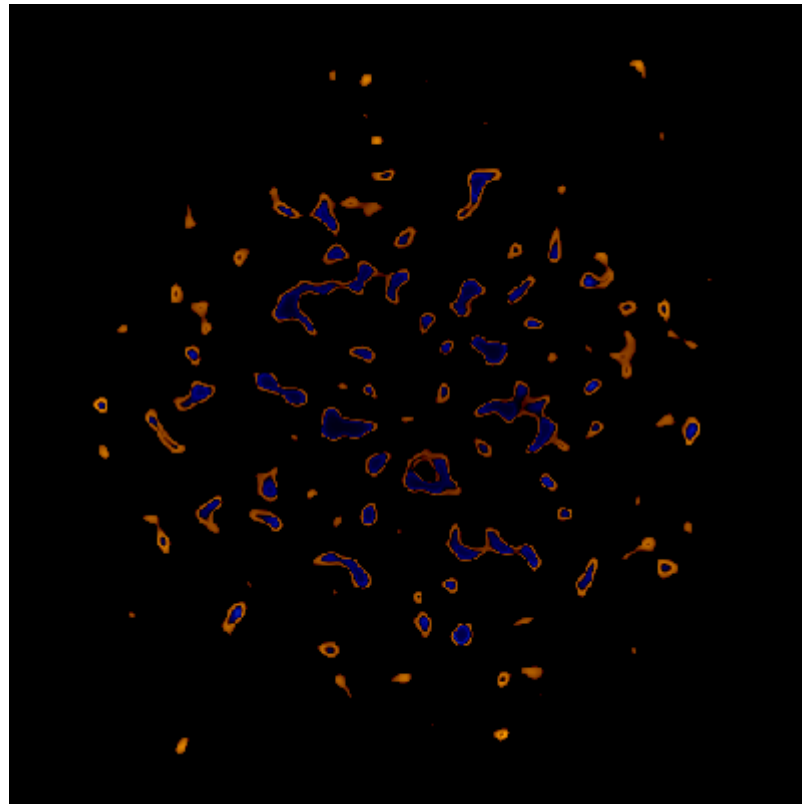
Rough surface – Typical friction loop (traction)



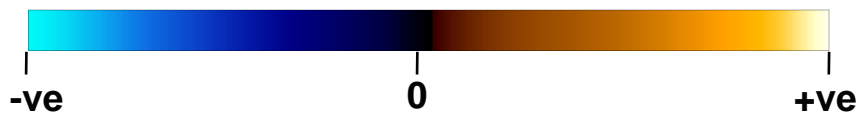
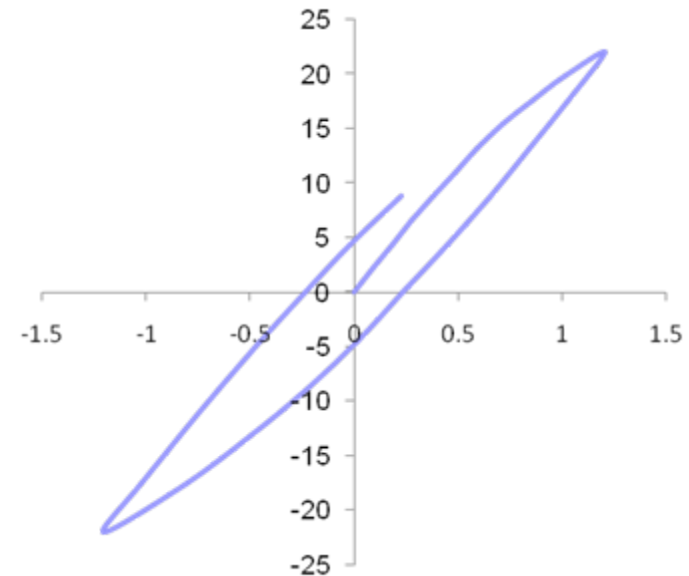
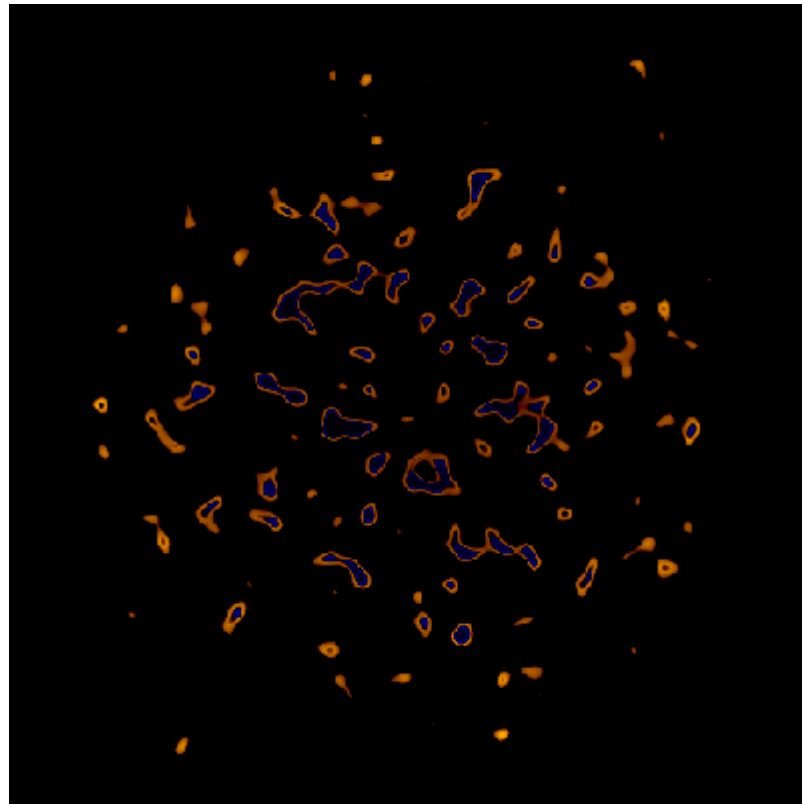
Rough surface – Typical friction loop (traction)



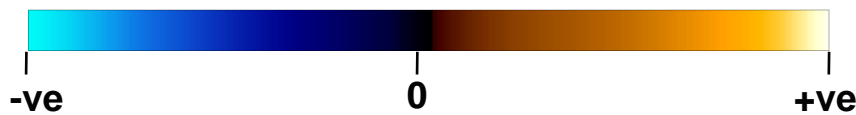
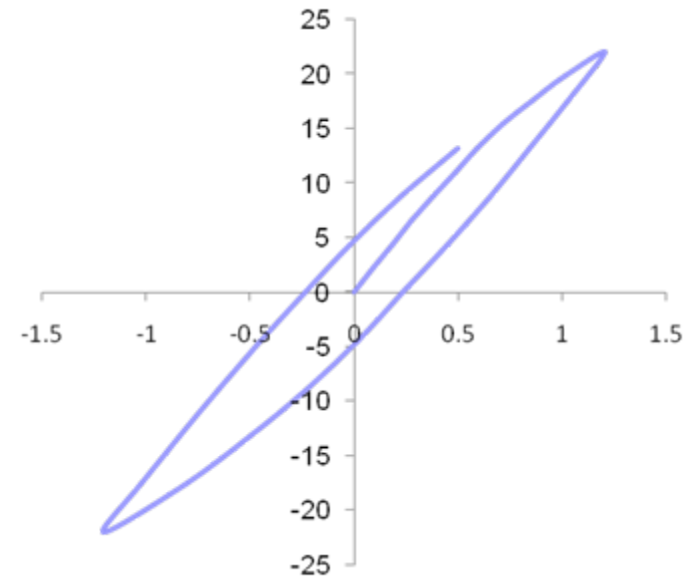
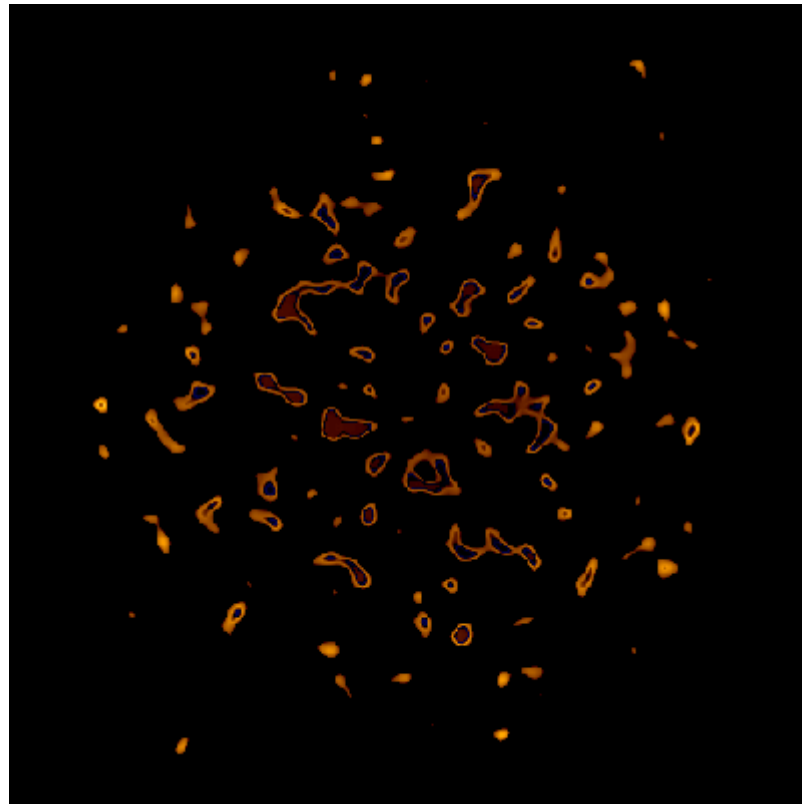
Rough surface – Typical friction loop (traction)



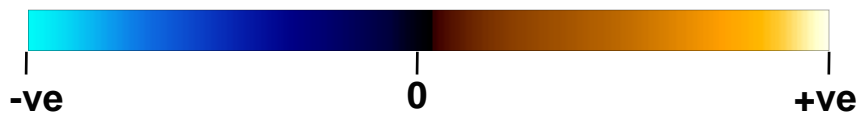
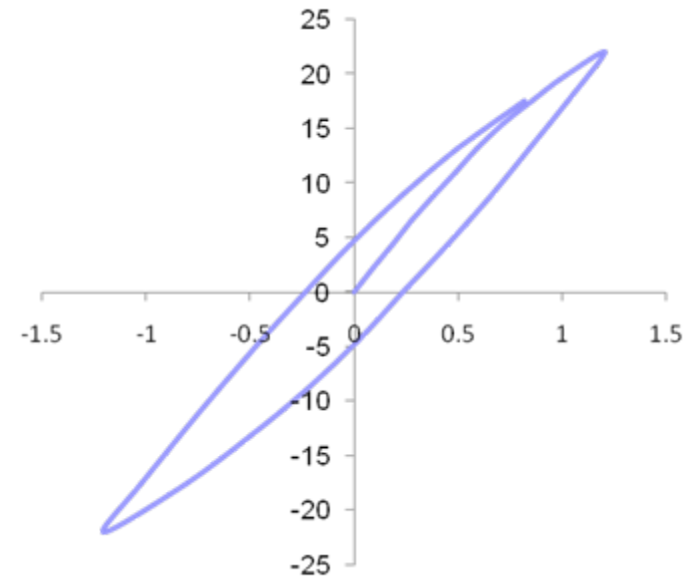
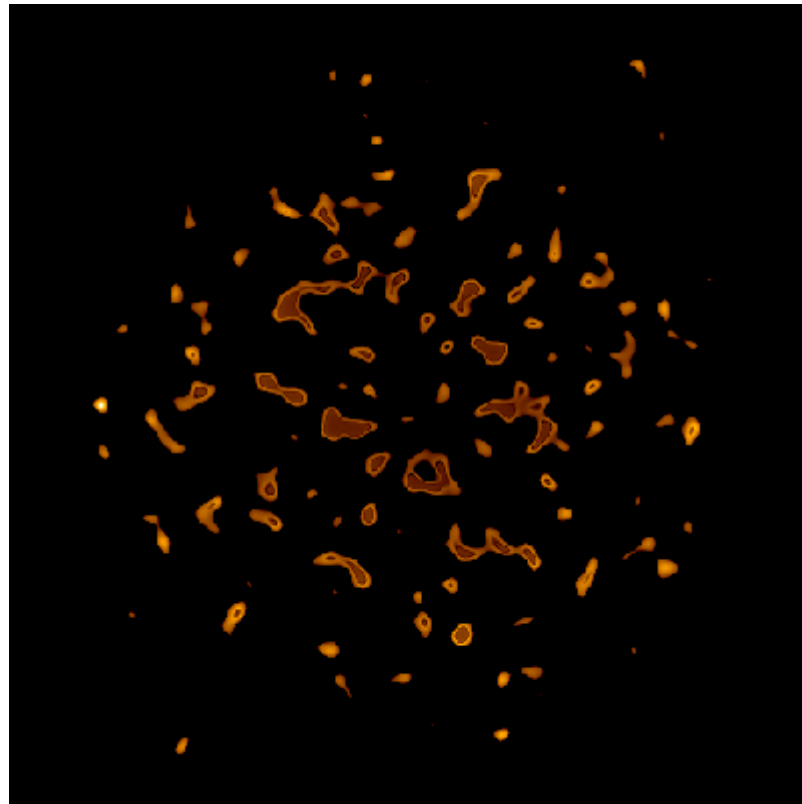
Rough surface – Typical friction loop (traction)



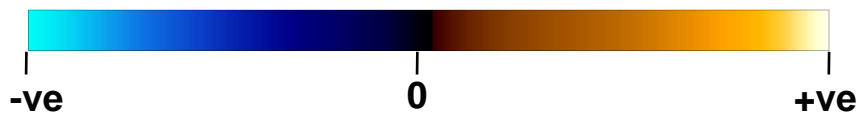
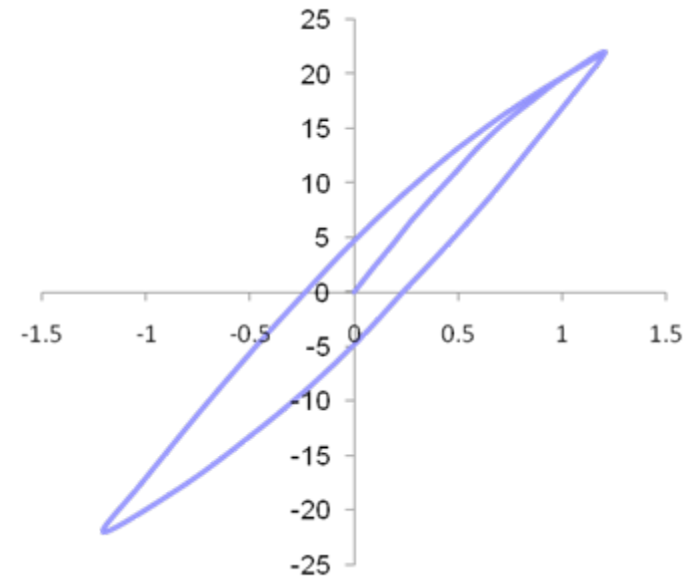
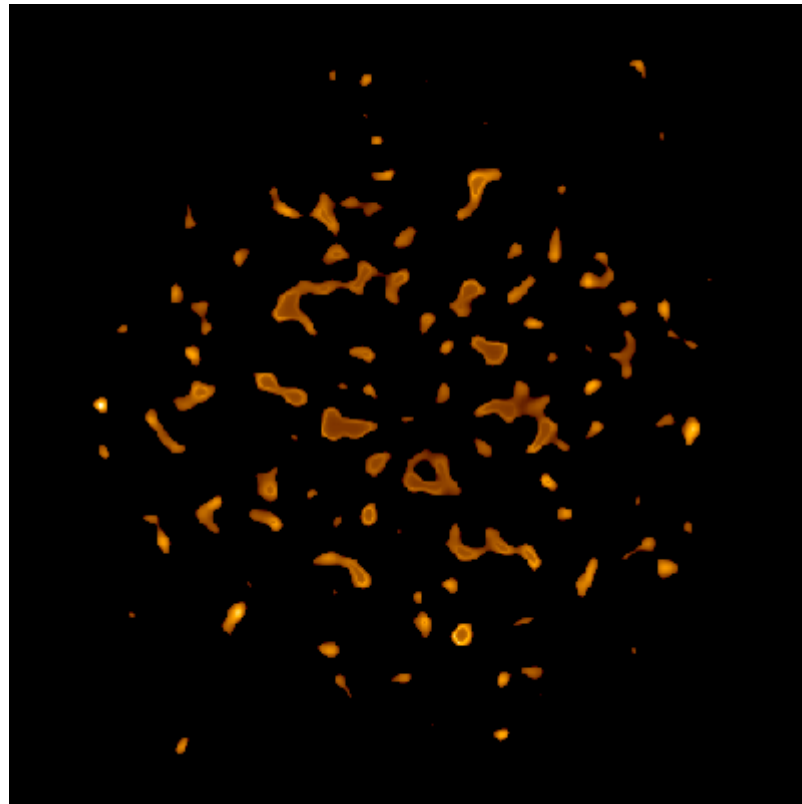
Rough surface – Typical friction loop (traction)



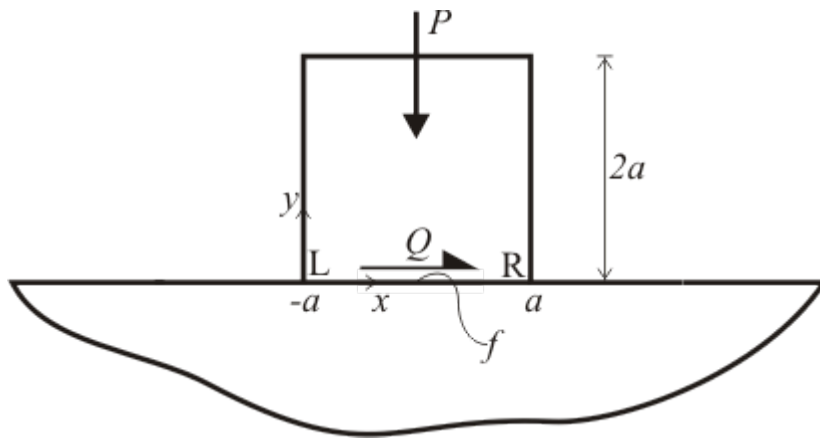
Rough surface – Typical friction loop (traction)



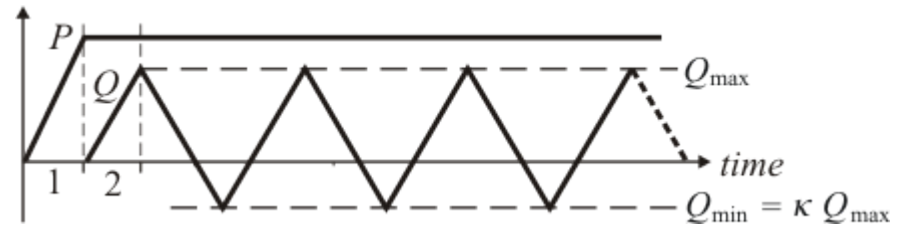
Rough surface – Typical friction loop (traction)



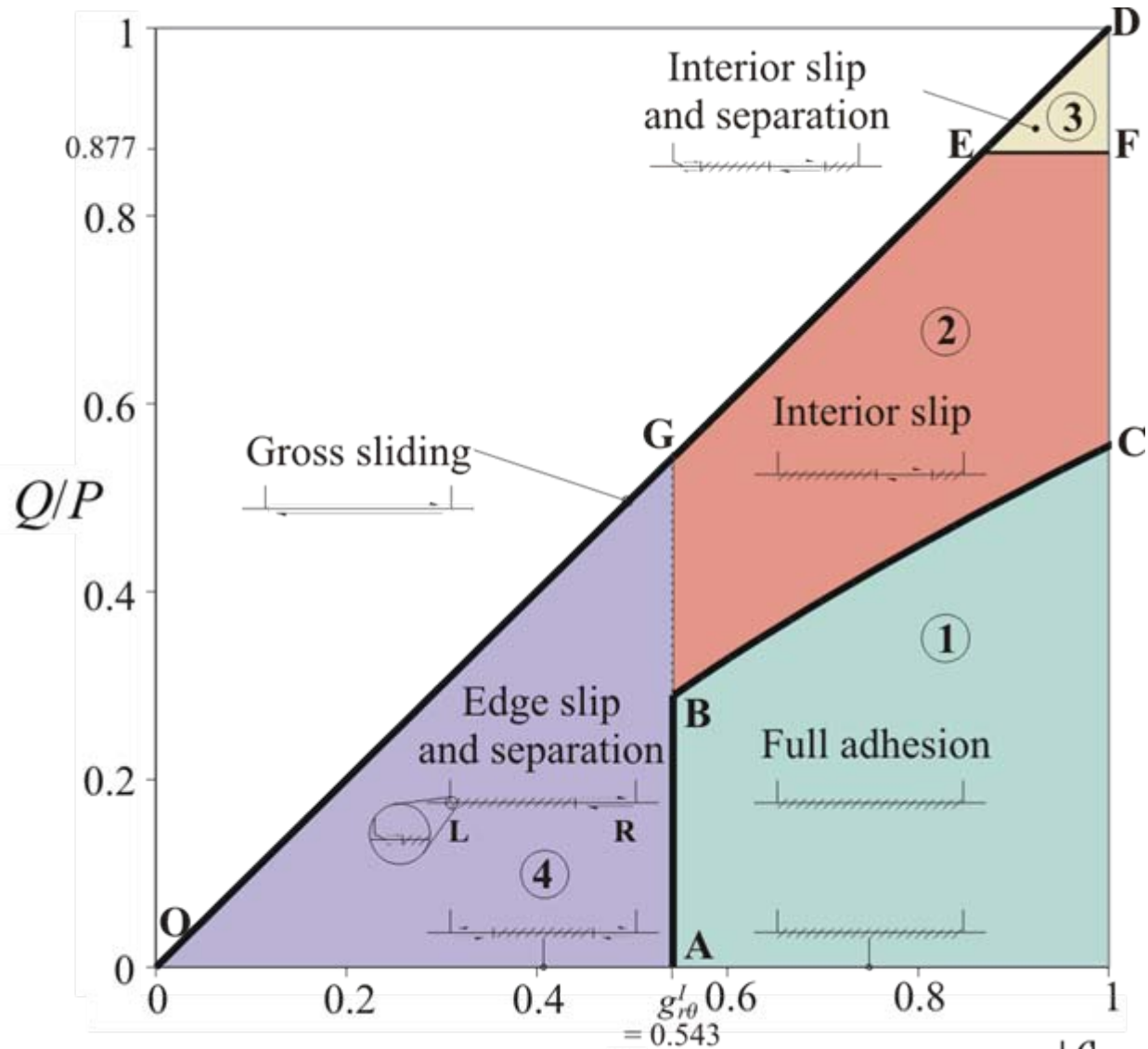
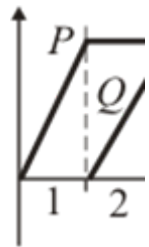
Complete contacts – (1) Static



Example contact geometry



Loading history



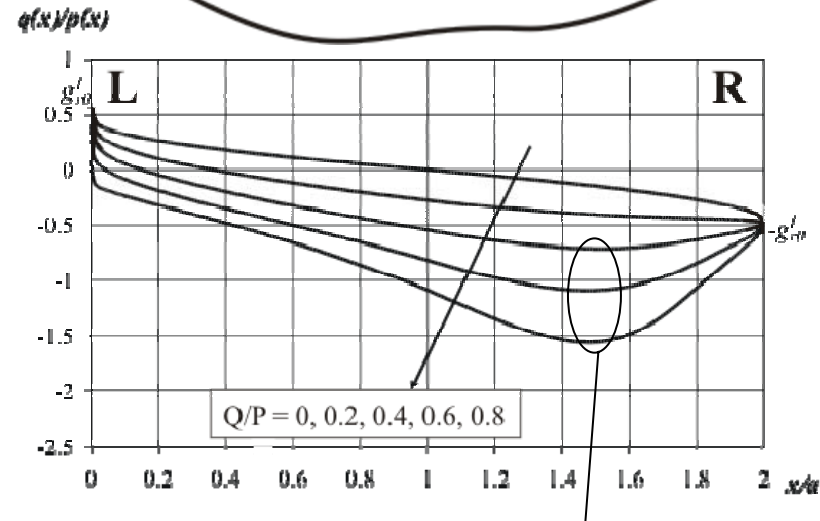
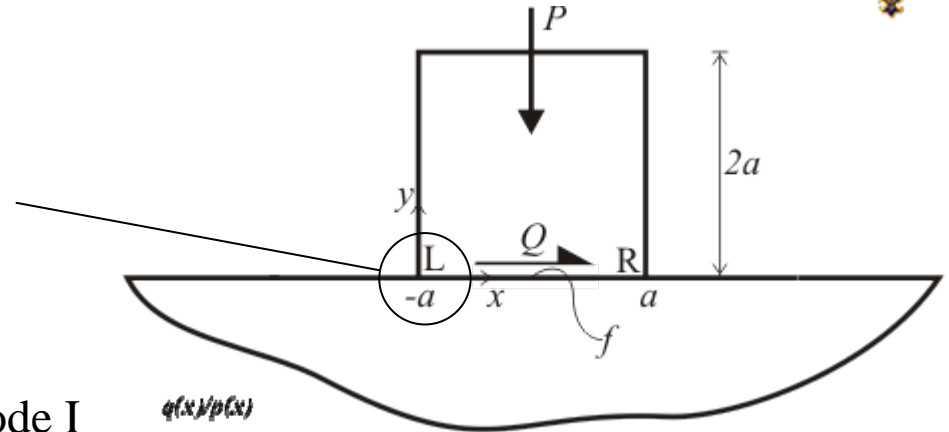
The traction ratio near the contact edge is

$$\frac{q(x)}{p(x)} = \frac{K_I^o g_{r\theta}^I x^{\lambda_I - 1} + K_{II}^o g_{r\theta}^{II} x^{\lambda_{II} - 1}}{K_I^o x^{\lambda_I - 1} + K_{II}^o x^{\lambda_{II} - 1}}$$

and because $\lambda_I - 1 < \lambda_{II} - 1 < 0$ the mode I singularity dominates the mode II singularity as $x \rightarrow 0$ to give

$$\left. \frac{q(x)}{p(x)} \right|_{x \rightarrow 0} = g_{r\theta}^I = 0.543$$

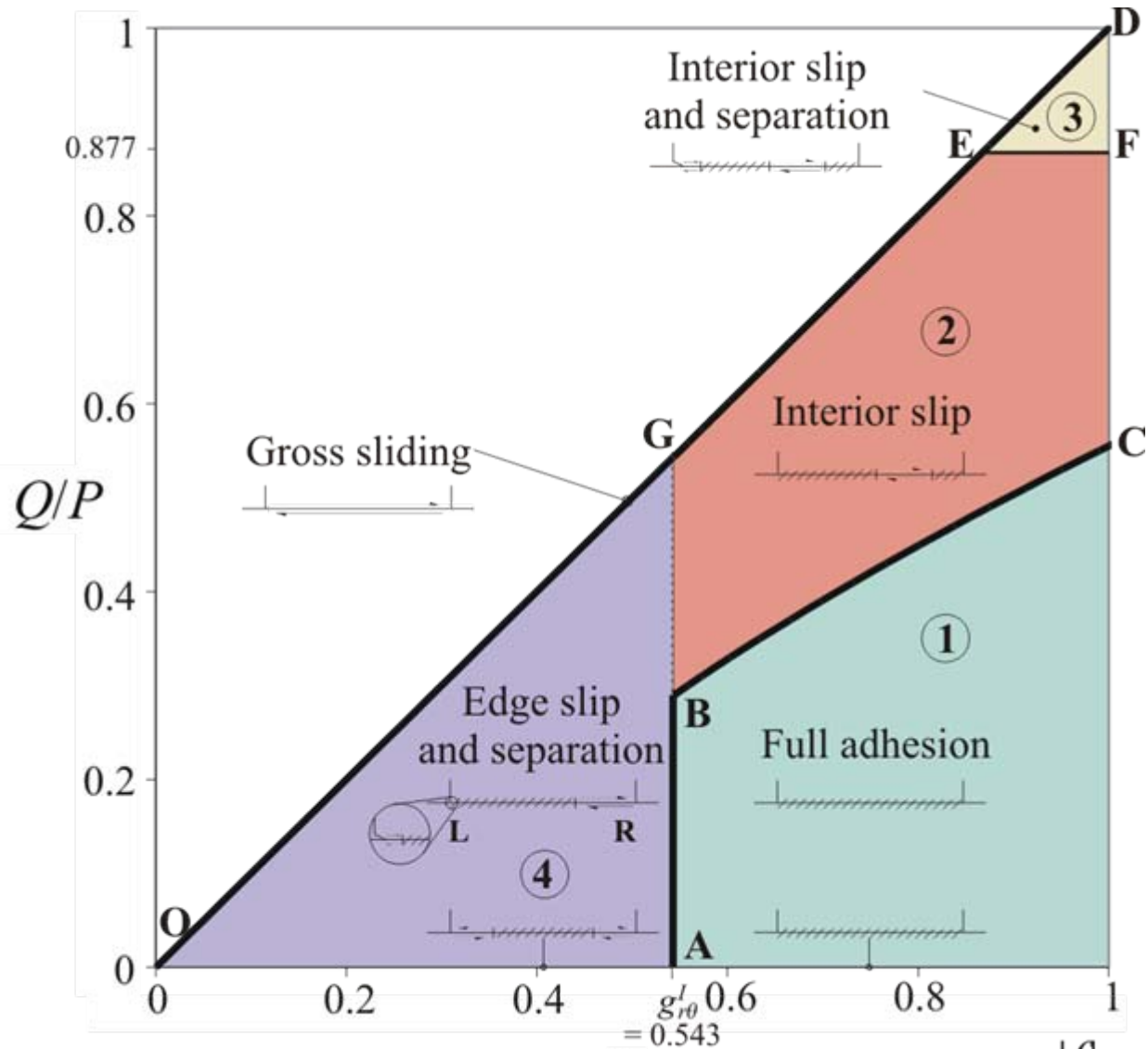
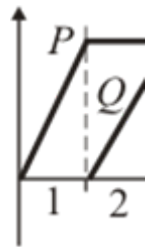
Therefore, *irrespective of the loading applied*, the traction ratio at the corner is **constant**.

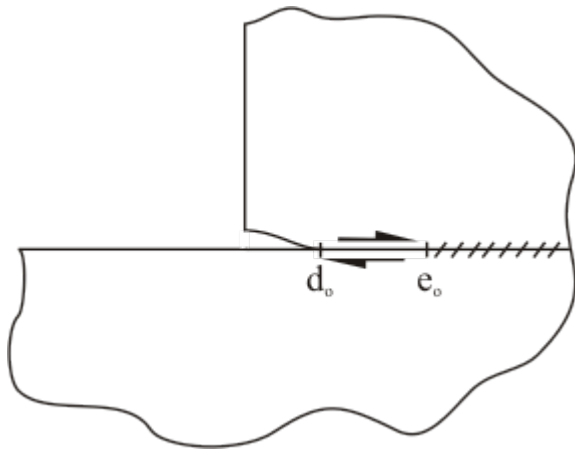


$|f| < 0.543$ Slip at the edge of the contact

$|f| > 0.543$ Adhesion at the edge

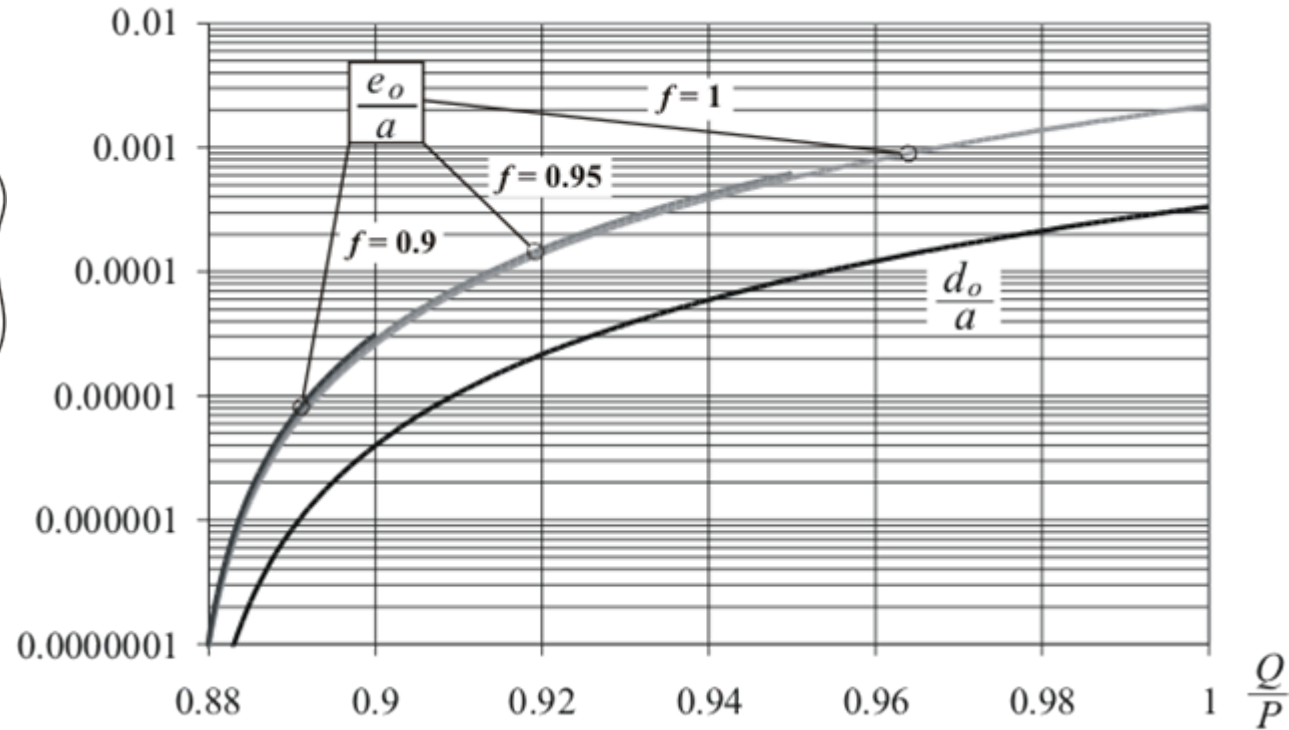
If interior maximum in traction ratio exceeds $|f|$ there is slip at an interior point.



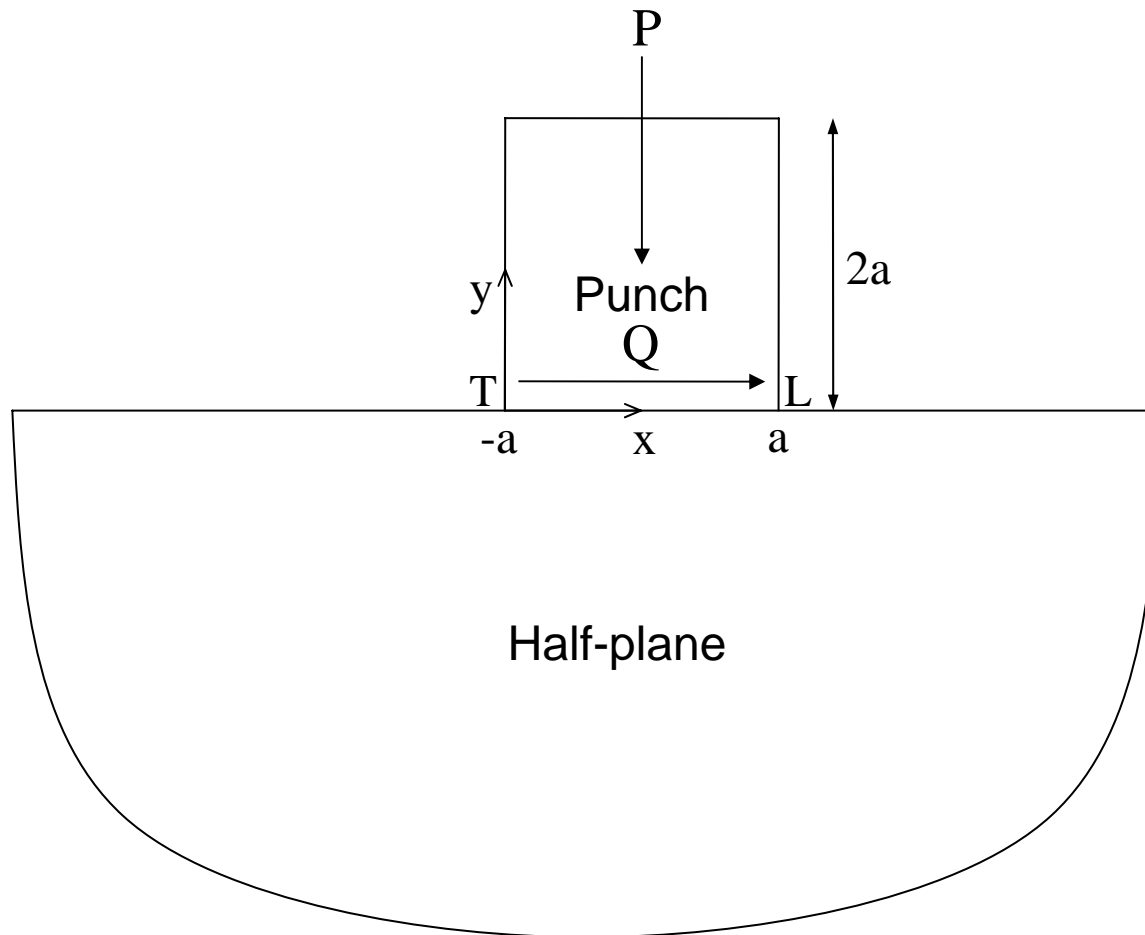


$$d_0 = \left(-\frac{K_I^o}{K_{II}^o} \right)^{\frac{1}{\lambda_{II} - \lambda_I}}$$

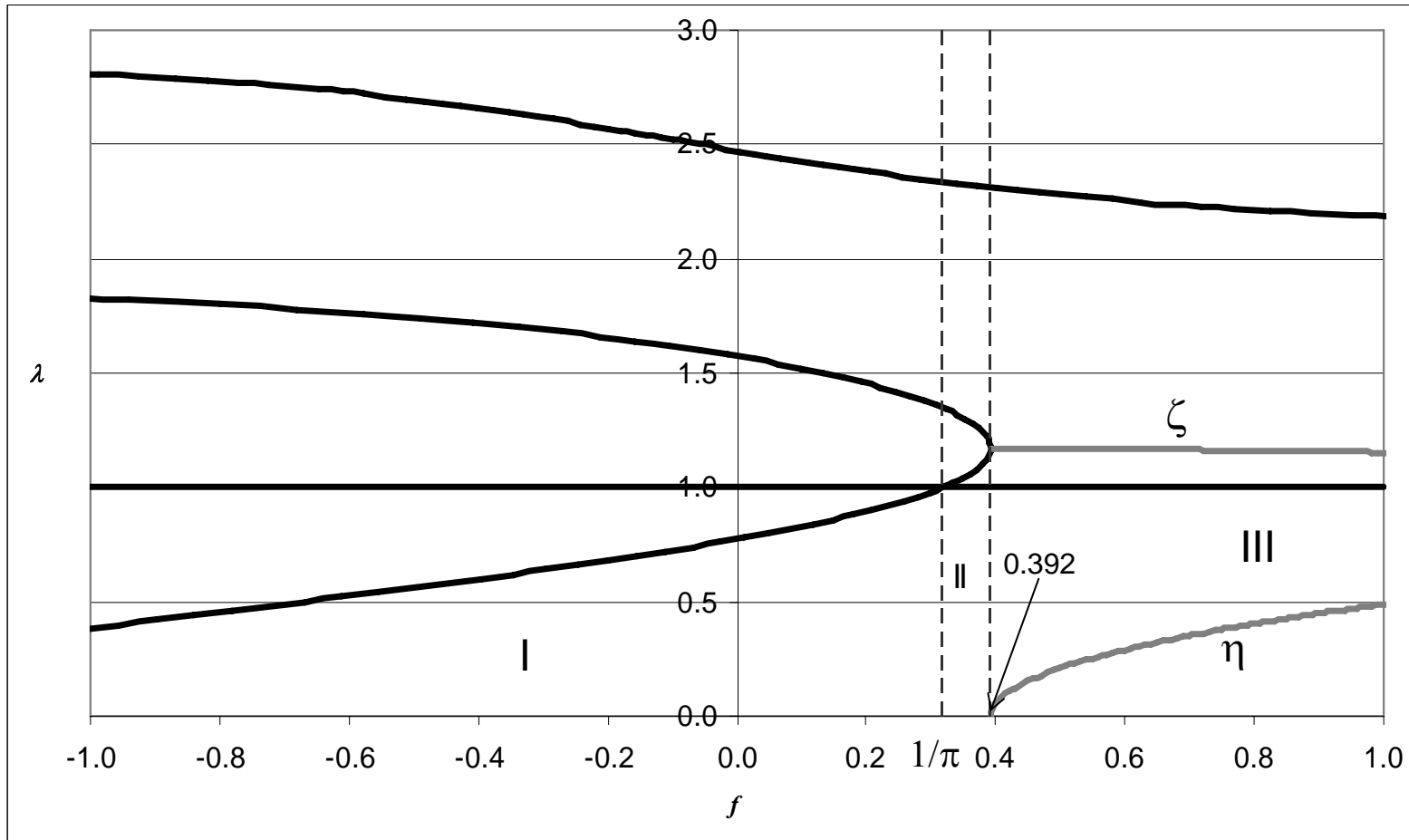
$$e_0 = \left(\frac{|f| + g_{r\theta}^I \left(-\frac{K_I^o}{K_{II}^o} \right)}{|f| + g_{r\theta}^{II} \left(-\frac{K_I^o}{K_{II}^o} \right)} \right)^{\frac{1}{\lambda_{II} - \lambda_I}}$$



Complete contacts – (2) Sliding



Eigenvalues Plot



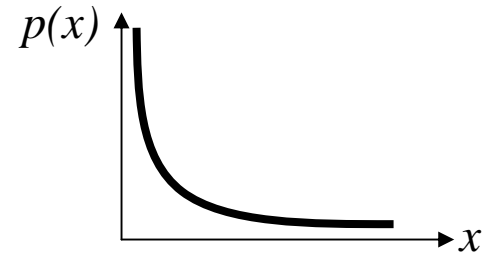
Leading edge

Trailing edge

Fundamental forms of the contact pressure

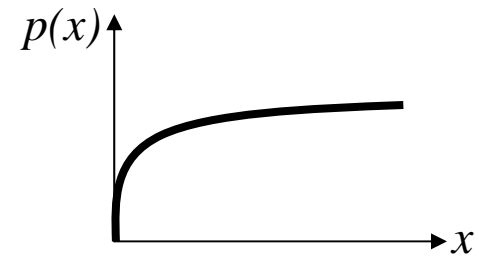
Region I : $f < 1/\pi$ (≈ 0.318)

$$p(x) = K_s x^{\lambda_s - 1} \quad 0 < \lambda_s < 1$$



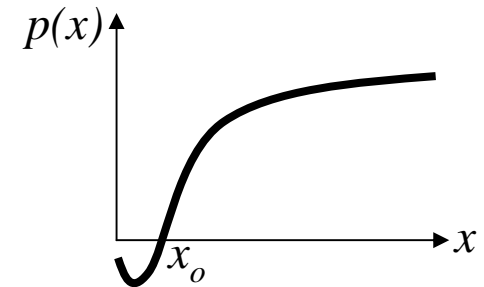
Region II : $0.318 < f < 0.392$

$$p(x) = K_{b1} x^{\lambda_{b1} - 1} + K_{b2} x^{\lambda_{b2} - 1} \quad 1 < \lambda_{b1}, \lambda_{b2} < 2$$

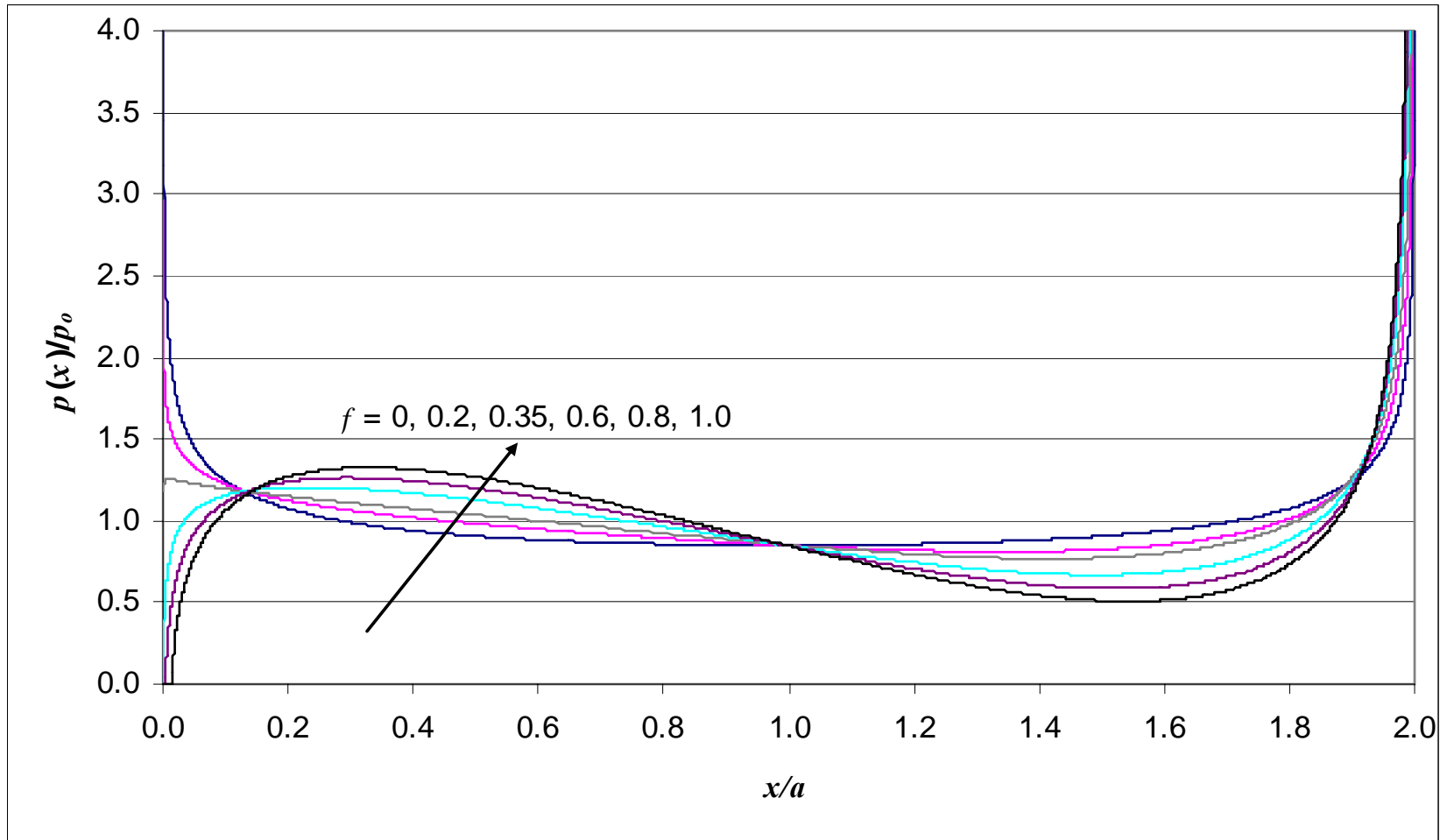


Region III : $f > 0.392$

$$p(x) = K_c x^{\zeta - 1} \sin\left(\eta \ln\left(\frac{x}{x_o}\right)\right) \quad 1 < \zeta < 2; 0 < \eta < 1$$

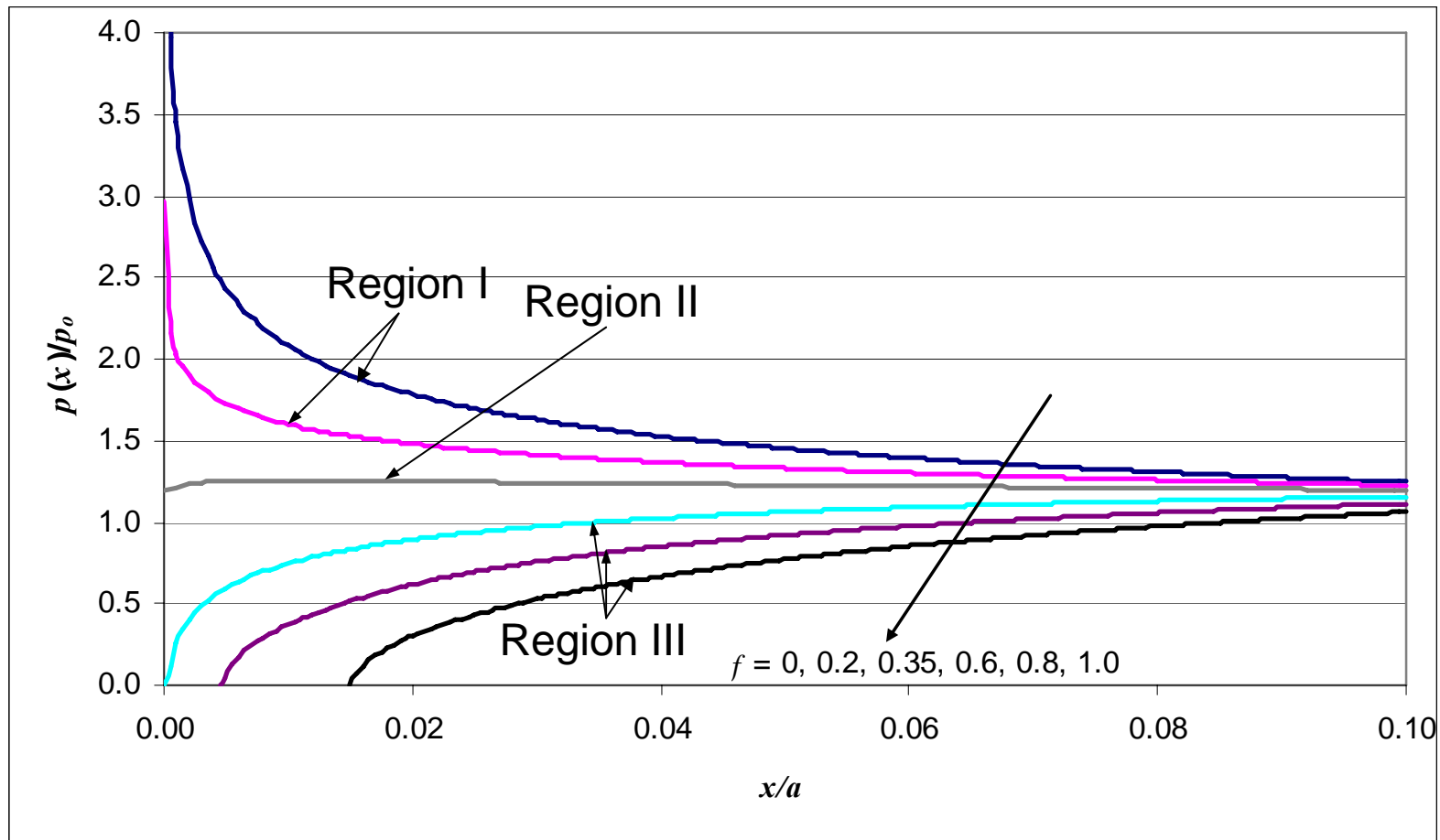


Contact pressure comparison



$$p_0 = \frac{P}{2a}$$

Contact pressure comparison (trailing edge)



General Behaviour Map of Sliding Contacts

